

Product datasheet for **TA356226**

Rgs7 Rabbit Polyclonal Antibody

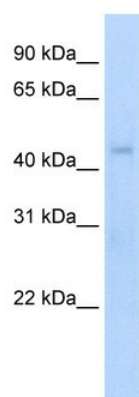
Product data:

Product Type:	Primary Antibodies
Applications:	WB
Reactivity:	Mouse
Host:	Rabbit
Clonality:	Polyclonal
Immunogen:	The immunogen is a synthetic peptide directed towards the N terminal region of mouse Rgs7
Specificity:	Expected reactivity: Cow, Human, Mouse, Rat Homology: Cow: 100%; Human: 100%; Mouse: 100%; Rat: 93%
Formulation:	Liquid. Purified antibody supplied in 1x PBS buffer with 0.09% (w/v) sodium azide and 2% sucrose.
Concentration:	lot specific
Purification:	Protein A purified
Conjugation:	Unconjugated
Storage:	For short term use, store at 2-8°C up to 1 week. For long term storage, store at -20°C in small aliquots to prevent freeze-thaw cycles.
Stability:	Shelf life: one year from despatch.
Predicted Protein Size:	52kDa
Gene Name:	regulator of G protein signaling 7
Database Link:	NP_036010 Entrez Gene 24012 Mouse P49802-2
Background:	Rgs7 inhibits signal transduction by increasing the GTPase activity of G protein alpha subunits thereby driving them into their inactive GDP-bound form. Activity on G(o)-alpha is specifically enhanced by the RGS6/GNG5 dimer. It may play an important role in the rapid regulation of neuronal excitability and the cellular responses to short-lived stimulations and in synaptic vesicle exocytosis
Synonyms:	OTTHUMP00000037994



[View online »](#)

Product images:



WB Suggested Anti-Rgs7 Antibody Titration:
5.0ug/ml
Positive Control: NIH/3T3 cell lysate