

Product datasheet for **TA356221**

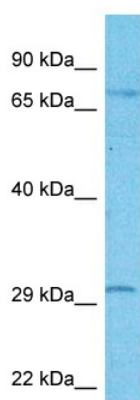
FOXR2 Rabbit Polyclonal Antibody

Product data:

Product Type:	Primary Antibodies
Applications:	WB
Reactivity:	Human
Host:	Rabbit
Clonality:	Polyclonal
Immunogen:	The immunogen is a synthetic peptide directed towards the middle region of Human FOXR2
Specificity:	Expected reactivity: Human, Yeast Homology: Human: 100%; Yeast: 77%
Formulation:	Liquid. Purified antibody supplied in 1x PBS buffer with 0.09% (w/v) sodium azide and 2% sucrose. <i>Note that this product is shipped as lyophilized powder to China customers.</i>
Concentration:	lot specific
Purification:	Affinity purified
Conjugation:	Unconjugated
Storage:	For short term use, store at 2-8°C up to 1 week. For long term storage, store at -20°C in small aliquots to prevent freeze-thaw cycles.
Stability:	Shelf life: one year from despatch.
Predicted Protein Size:	34kDa
Gene Name:	forkhead box R2
Database Link:	NP_940853 Entrez Gene 139628 Human Q6PJQ5
Background:	The function of this protein remains unknown.
Synonyms:	FOXN6; MGC21658



[View online »](#)

Product images:

Host: Rabbit
Target Name: FOXR2
Sample Tissue: U937 Cell Lysate
Antibody Dilution: 1.0 μ g/ml

Host: Rabbit
Target Name: FOXR2
Sample Type: U937 Whole Cell lysates
Antibody Dilution: 1.0ug/ml