

Product datasheet for TA356215

Iroquois homeobox protein 3 (IRX3) Rabbit Polyclonal Antibody

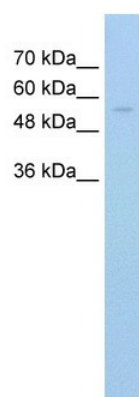
Product data:

Product Type:	Primary Antibodies
Applications:	IHC, WB
Reactivity:	Human
Host:	Rabbit
Clonality:	Polyclonal
Immunogen:	The immunogen is a synthetic peptide directed towards the C terminal region of human IRX3
Specificity:	Expected reactivity: Cow, Dog, Horse, Human, Mouse, Pig, Rabbit, Rat Homology: Cow: 93%; Dog: 93%; Horse: 90%; Human: 100%; Mouse: 86%; Pig: 93%; Rabbit: 86%; Rat: 100%
Formulation:	Liquid. Purified antibody supplied in 1x PBS buffer with 0.09% (w/v) sodium azide and 2% sucrose. <i>Note that this product is shipped as lyophilized powder to China customers.</i>
Concentration:	lot specific
Purification:	Affinity Purified
Conjugation:	Unconjugated
Storage:	For short term use, store at 2-8°C up to 1 week. For long term storage, store at -20°C in small aliquots to prevent freeze-thaw cycles.
Stability:	Shelf life: one year from despatch.
Predicted Protein Size:	52kDa
Gene Name:	iroquois homeobox 3
Database Link:	NP_077312 Entrez Gene 79191 Human P78415
Background:	IRX3 is a member of the Iroquois homeobox gene family that encodes a protein known for its essential role in spinal cord development.
Synonyms:	FLJ99187; IRX-1; IRXB1
Protein Families:	Transcription Factors

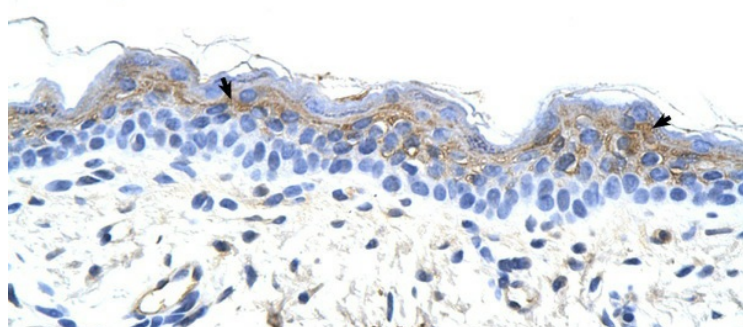


[View online »](#)

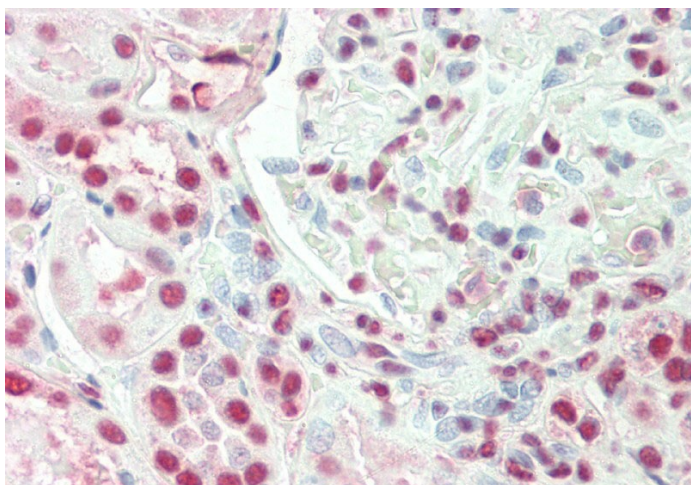
Product images:



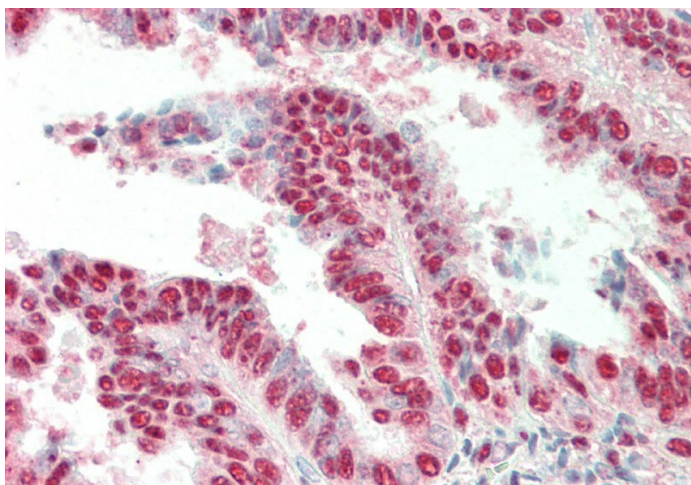
WB Suggested Anti-IRX3 Antibody Titration: 0.2-1 ug/ml
Positive Control: HepG2 cell lysate



Human Skin



Rabbit Anti-IRX3 antibody
Catalog Number: ARP42801
Formalin Fixed Paraffin Embedded Tissue:
Human Kidney
Primary antibody Concentration: 1:100
Secondary Antibody: Donkey anti-Rabbit-Cy3
Secondary Antibody Concentration: 1:200
Magnification: 20x
Exposure Time: 0.5-2.0sec



Rabbit Anti-IRX3 antibody
Catalog Number: ARP42801
Formalin Fixed Paraffin Embedded Tissue:
Human Uterus
Primary antibody Concentration: 1:100
Secondary Antibody: Donkey anti-Rabbit-Cy3
Secondary Antibody Concentration: 1:200
Magnification: 20x
Exposure Time: 0.5-2.0sec