

## Product datasheet for **TA356208**

### EPS8L1 Rabbit Polyclonal Antibody

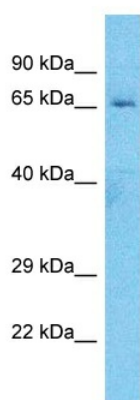
#### Product data:

Product Type:	Primary Antibodies
Applications:	WB
Reactivity:	Human
Host:	Rabbit
Clonality:	Polyclonal
Immunogen:	The immunogen is a synthetic peptide directed towards the C-terminal region of Human ES8L1
Specificity:	<b>Expected reactivity:</b> Human
Formulation:	Liquid. Purified antibody supplied in 1x PBS buffer with 0.09% (w/v) sodium azide and 2% sucrose.
Concentration:	lot specific
Purification:	Affinity purified
Conjugation:	Unconjugated
Storage:	For short term use, store at 2-8°C up to 1 week. For long term storage, store at -20°C in small aliquots to prevent freeze-thaw cycles.
Stability:	Shelf life: one year from despatch.
Predicted Protein Size:	60kDa
Gene Name:	EPS8 like 1
Database Link:	<a href="#">Entrez Gene 54869 Human Q8TE68-3</a>
Background:	This gene encodes a protein that is related to epidermal growth factor receptor pathway substrate 8 (EPS8), a substrate for the epidermal growth factor receptor. The function of this protein is unknown. At least two alternatively spliced transcript variants encoding different isoforms have been found for this gene.
Synonyms:	DRC3; EPS8R1; FLJ20258; MGC4642; MGC23164; PP10566



[View online »](#)

## Product images:



Host: Rabbit  
Target Name: ES8L1  
Sample Tissue: MDA-MB-435s Cell Lysate  
Antibody Dilution: 1.0µg/ml

Host: Rabbit  
Target Name: ES8L1  
Sample Type: MDA-MB-435s Whole Cell lysates  
Antibody Dilution: 1.0ug/ml