

## Product datasheet for **TA356207**

### SLC22A7 Rabbit Polyclonal Antibody

#### Product data:

Product Type:	Primary Antibodies
Applications:	WB
Reactivity:	Human
Host:	Rabbit
Clonality:	Polyclonal
Immunogen:	The immunogen is a synthetic peptide directed towards the N-terminal region of Human SLC22A7
Specificity:	<b>Expected reactivity:</b> Cow, Dog, Guinea Pig, Horse, Human, Mouse, Pig, Rabbit, Rat <b>Homology:</b> Cow: 100%; Dog: 79%; Guinea Pig: 83%; Horse: 93%; Human: 100%; Mouse: 100%; Pig: 92%; Rabbit: 100%; Rat: 100%
Formulation:	Liquid. Purified antibody supplied in 1x PBS buffer with 0.09% (w/v) sodium azide and 2% sucrose. <i>Note that this product is shipped as lyophilized powder to China customers.</i>
Concentration:	lot specific
Purification:	Affinity Purified
Conjugation:	Unconjugated
Storage:	For short term use, store at 2-8°C up to 1 week. For long term storage, store at -20°C in small aliquots to prevent freeze-thaw cycles.
Stability:	Shelf life: one year from despatch.
Predicted Protein Size:	60kDa
Gene Name:	solute carrier family 22 member 7
Database Link:	<a href="#">NP_696961</a> <a href="#">Entrez Gene 10864 Human</a> <a href="#">Q9Y694</a>



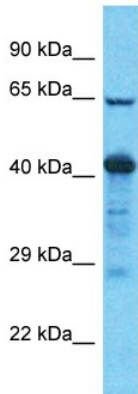
[View online »](#)

**Background:** The protein encoded by this gene is involved in the sodium-independent transport and excretion of organic anions, some of which are potentially toxic. The encoded protein is an integral membrane protein and appears to be localized to the basolateral membrane of the kidney. Alternatively spliced transcript variants encoding different isoforms have been described.

**Synonyms:** hOAT2; MGC24091; MGC45202; NLT; OAT2

**Protein Families:** Druggable Genome, Transmembrane

### Product images:



Host: Rabbit  
Target Name: SLC22A7  
Sample Tissue: Esophagus Tumor Lysate  
Antibody Dilution: 1.0 $\mu$ g/ml

Host: Rabbit  
Target Name: SLC22A7  
Sample Tissue: Human Esophagus Tumor  
Antibody Dilution: 1 $\mu$ g/ml