

## Product datasheet for **TA356202**

### SLC19A3 Rabbit Polyclonal Antibody

#### Product data:

Product Type:	Primary Antibodies
Applications:	WB
Reactivity:	Human
Host:	Rabbit
Clonality:	Polyclonal
Immunogen:	The immunogen is a synthetic peptide directed towards the middle region of human SLC19A3
Specificity:	<b>Expected reactivity:</b> Cow, Dog, Guinea Pig, Horse, Human, Mouse, Rabbit, Rat <b>Homology:</b> Cow: 86%; Dog: 86%; Guinea Pig: 100%; Horse: 86%; Human: 100%; Mouse: 100%; Rabbit: 86%; Rat: 100%
Formulation:	Liquid. Purified antibody supplied in 1x PBS buffer with 0.09% (w/v) sodium azide and 2% sucrose.
Concentration:	lot specific
Purification:	Affinity Purified
Conjugation:	Unconjugated
Storage:	For short term use, store at 2-8°C up to 1 week. For long term storage, store at -20°C in small aliquots to prevent freeze-thaw cycles.
Stability:	Shelf life: one year from despatch.
Predicted Protein Size:	56kDa
Gene Name:	solute carrier family 19 member 3
Database Link:	<a href="#">NP_079519</a> <a href="#">Entrez Gene 80704 Human</a> <a href="#">Q9BZV2</a>
Background:	SLC19A3 mediates high affinity thiamine uptake, propably via a proton anti-port mechanism. SLC19A3 has no folate transport activity.SLC19A3 is a member of the reduced folate family of micronutrient transporter genes.[supplied by OMIM]. Publication Note: This RefSeq record includes a subset of the publications that are available for this gene. Please see the Entrez Gene record to access additional publications.
Synonyms:	OTTHUMP00000204103; ThTr-2; THTR2

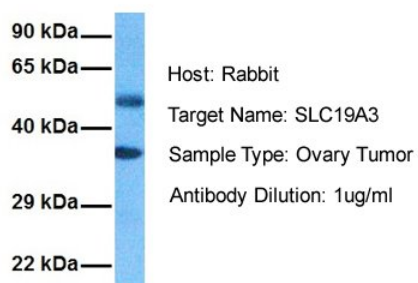


[View online »](#)

Protein Families: Transmembrane

## Product images:

### SLC19A3



Host: Rabbit

Target Name: SLC19A3

Sample Type: Ovary Tumor

Antibody Dilution: 1ug/ml

Host: Rabbit

Target Name: SLC19A3

Sample Tissue: Human Ovary Tumor

Antibody Dilution: 1.0ug/ml