

Product datasheet for **TA356197**

Lrp2bp Rabbit Polyclonal Antibody

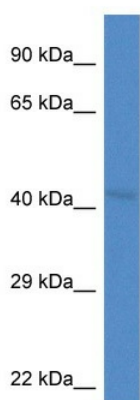
Product data:

Product Type:	Primary Antibodies
Applications:	WB
Reactivity:	Human, Rat
Host:	Rabbit
Clonality:	Polyclonal
Specificity:	Expected reactivity: Cow, Dog, Guinea Pig, Horse, Human, Mouse, Pig, Rabbit, Rat, Zebrafish Homology: Cow: 100%; Dog: 100%; Guinea Pig: 93%; Horse: 100%; Human: 100%; Mouse: 100%; Pig: 100%; Rabbit: 100%; Rat: 100%; Zebrafish: 92%
Formulation:	Liquid. Purified antibody supplied in 1x PBS buffer with 0.09% (w/v) sodium azide and 2% sucrose. <i>Note that this product is shipped as lyophilized powder to China customers.</i>
Concentration:	lot specific
Purification:	Affinity Purified
Conjugation:	Unconjugated
Storage:	For short term use, store at 2-8°C up to 1 week. For long term storage, store at -20°C in small aliquots to prevent freeze-thaw cycles.
Stability:	Shelf life: one year from despatch.
Predicted Protein Size:	40kDa
Gene Name:	Lrp2 binding protein
Database Link:	NP_001017443 Entrez Gene 55805 Human Entrez Gene 290753 Rat Q569C2
Background:	Lrp2bp may act as an adapter that regulates LRP2 function.
Synonyms:	DKFZp761O0113; FLJ44965; KIAA1325; MegBP

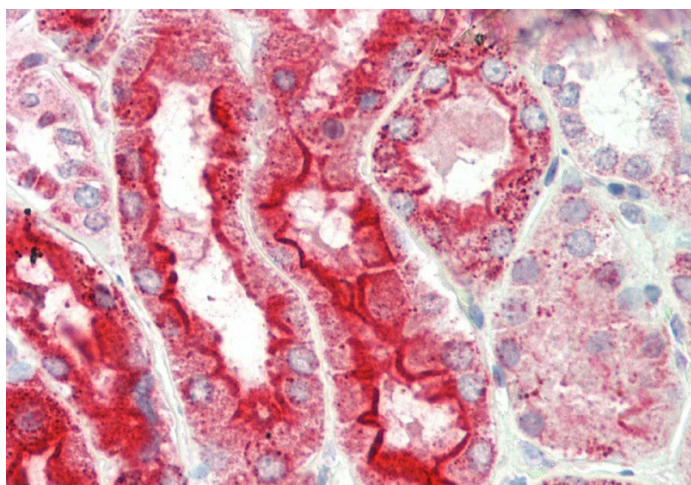


[View online »](#)

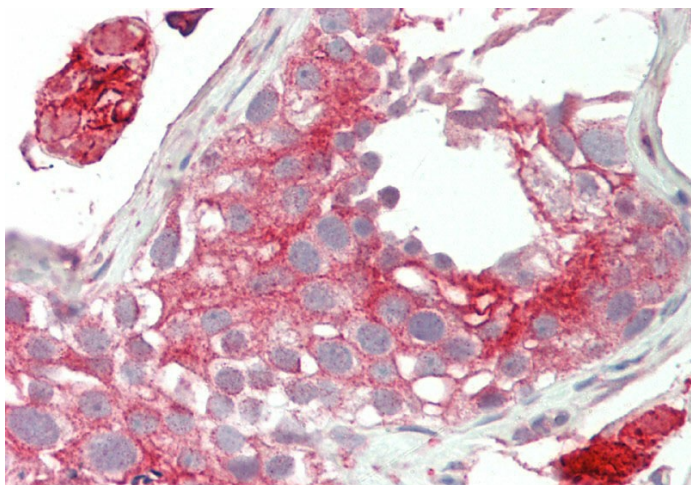
Product images:



WB Suggested Anti-Lrp2bp Antibody
Titration: 1.0 ug/ml
Positive Control: Rat Lung



Rabbit Anti-Lrp2bp antibody
Catalog Number: ARP42516
Formalin Fixed Paraffin Embedded Tissue:
Human Kidney
Primary antibody Concentration: 1:100
Secondary Antibody: Donkey anti-Rabbit-Cy3
Secondary Antibody Concentration: 1:200
Magnification: 20x
Exposure Time: 0.5-2.0sec



Rabbit Anti-Lrp2bp antibody
Catalog Number: ARP42516
Formalin Fixed Paraffin Embedded Tissue:
Human Testis
Primary antibody Concentration: 1:100
Secondary Antibody: Donkey anti-Rabbit-Cy3
Secondary Antibody Concentration: 1:200
Magnification: 20x
Exposure Time: 0.5-2.0sec