

## Product datasheet for **TA356195**

### CUEDC1 Rabbit Polyclonal Antibody

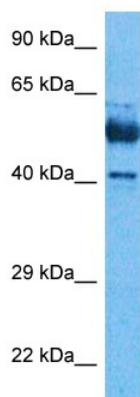
#### Product data:

Product Type:	Primary Antibodies
Applications:	WB
Reactivity:	Human
Host:	Rabbit
Clonality:	Polyclonal
Immunogen:	The immunogen is a synthetic peptide directed towards the N region of human CUED1
Specificity:	<b>Expected reactivity:</b> Human <b>Homology:</b> Cow: 93%; Dog: 100%; Guinea Pig: 93%; Horse: 93%; Human: 100%; Mouse: 100%; Pig: 100%; Rabbit: 93%; Rat: 100%; Zebrafish: 100%
Formulation:	Liquid. Purified antibody supplied in 1x PBS buffer with 0.09% (w/v) sodium azide and 2% sucrose.
Concentration:	lot specific
Purification:	Affinity purified
Conjugation:	Unconjugated
Storage:	For short term use, store at 2-8°C up to 1 week. For long term storage, store at -20°C in small aliquots to prevent freeze-thaw cycles.
Stability:	Shelf life: one year from despatch.
Predicted Protein Size:	42 kDa
Gene Name:	CUE domain containing 1
Database Link:	<a href="#">NP_001258804.1</a> <a href="#">Entrez Gene 404093 Human</a> <a href="#">Q9NWM3</a>
Synonyms:	DKFZp547L163; FLJ20739
Protein Families:	Druggable Genome



[View online »](#)

## Product images:



Host: Rabbit  
Target Name: CUED1  
Sample Type: Thymus Tumor Lysate  
Antibody Dilution: 1.0µg/ml

Host: Rabbit  
Target Name: CUED1  
Sample Tissue: Thymus Tumor lysates  
Antibody Dilution: 1ug/ml