

Product datasheet for TA356192

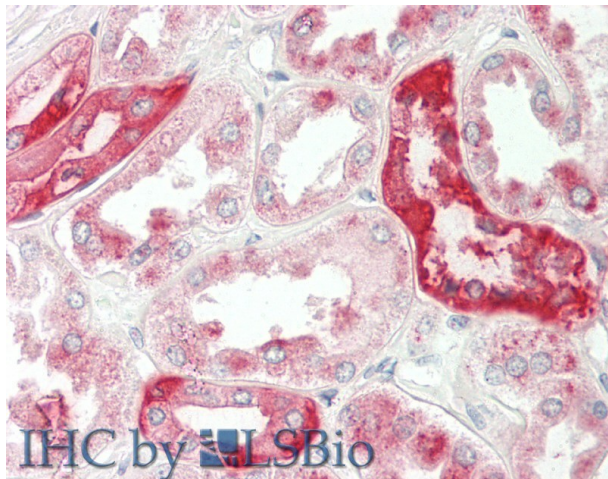
RHCG Rabbit Polyclonal Antibody

Product data:

Product Type:	Primary Antibodies
Applications:	IHC
Reactivity:	Human
Host:	Rabbit
Clonality:	Polyclonal
Immunogen:	The immunogen is a synthetic peptide directed towards the following sequence QSKERQNSVYQSDLFAMIGTLFLWMYWPSFNSAISYHGDSQHRAAINTYC
Specificity:	Expected reactivity: Cow, Dog, Guinea Pig, Horse, Human, Mouse, Rat, Sheep, Zebrafish Homology: Cow: 86%; Dog: 79%; Guinea Pig: 86%; Horse: 79%; Human: 100%; Mouse: 79%; Rat: 86%; Sheep: 86%; Zebrafish: 86%
Formulation:	Liquid. Purified antibody supplied in 1x PBS buffer with 0.09% (w/v) sodium azide and 2% sucrose.
Concentration:	lot specific
Purification:	Affinity Purified
Conjugation:	Unconjugated
Storage:	For short term use, store at 2-8°C up to 1 week. For long term storage, store at -20°C in small aliquots to prevent freeze-thaw cycles.
Stability:	Shelf life: one year from despatch.
Predicted Protein Size:	53 kDa
Gene Name:	Rh family C glycoprotein
Database Link:	NP_057405 Entrez Gene 51458 Human Q9UBD6
Synonyms:	C15orf6; CDRC2; PDRC2; RHGK; SLC42A3
Protein Families:	Transmembrane



[View online »](#)

Product images:

Rabbit Anti-RHCG antibody
Catalog Number: ARP42465
Formalin Fixed Paraffin Embedded Tissue:
Human Kidney
Primary antibody Concentration: 1:100
Secondary Antibody: Donkey anti-Rabbit-Cy3
Secondary Antibody Concentration: 1:200
Magnification: 20x
Exposure Time: 0.5-2.0sec