

Product datasheet for **TA356181**

MAB21L2 Rabbit Polyclonal Antibody

Product data:

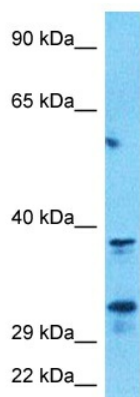
Product Type:	Primary Antibodies
Applications:	WB
Reactivity:	Human
Host:	Rabbit
Clonality:	Polyclonal
Immunogen:	The immunogen is a synthetic peptide directed towards the N-terminal region of Human MB212
Specificity:	Expected reactivity: Cow, Dog, Guinea Pig, Horse, Human, Mouse, Rabbit, Rat, Zebrafish Homology: Cow: 100%; Dog: 100%; Guinea Pig: 100%; Horse: 100%; Human: 100%; Mouse: 100%; Rabbit: 85%; Rat: 100%; Zebrafish: 93%
Formulation:	Liquid. Purified antibody supplied in 1x PBS buffer with 0.09% (w/v) sodium azide and 2% sucrose. <i>Note that this product is shipped as lyophilized powder to China customers.</i>
Concentration:	lot specific
Purification:	Affinity purified
Conjugation:	Unconjugated
Storage:	For short term use, store at 2-8°C up to 1 week. For long term storage, store at -20°C in small aliquots to prevent freeze-thaw cycles.
Stability:	Shelf life: one year from despatch.
Predicted Protein Size:	39kDa
Gene Name:	mab-21 like 2
Database Link:	NP_006430 Entrez Gene 10586 Human Q9Y586
Background:	This gene is similar to the C. elegans MAB-21 cell fate-determining gene, a downstream target of transforming growth factor-beta signaling. It is thought that this gene may be involved in neural development. The protein encoded by this gene is primarily nuclear, although some cytoplasmic localization has been observed.



[View online »](#)

Synonyms: FLJ31103

Product images:



Host: Rabbit
Target Name: MB212
Sample Tissue: U937 Cell Lysate
Antibody Dilution: 1.0µg/ml

Host: Rabbit
Target Name: MB212
Sample Type: U937 Whole Cell lysates
Antibody Dilution: 1.0ug/ml