

## Product datasheet for **TA356180**

### Endou Rabbit Polyclonal Antibody

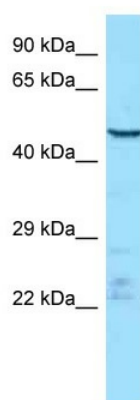
#### Product data:

Product Type:	Primary Antibodies
Applications:	WB
Reactivity:	Mouse
Host:	Rabbit
Clonality:	Polyclonal
Specificity:	<b>Expected reactivity:</b> Cow, Dog, Guinea Pig, Horse, Human, Mouse, Rabbit, Rat <b>Homology:</b> Cow: 92%; Dog: 75%; Guinea Pig: 93%; Horse: 93%; Human: 100%; Mouse: 100%; Rabbit: 83%; Rat: 100%
Formulation:	Liquid. Purified antibody supplied in 1x PBS buffer with 0.09% (w/v) sodium azide and 2% sucrose.
Concentration:	lot specific
Purification:	Affinity Purified
Conjugation:	Unconjugated
Storage:	For short term use, store at 2-8°C up to 1 week. For long term storage, store at -20°C in small aliquots to prevent freeze-thaw cycles.
Stability:	Shelf life: one year from despatch.
Predicted Protein Size:	45kDa
Gene Name:	endonuclease, polyU-specific
Database Link:	<a href="#">NP_001162164</a> <a href="#">Entrez Gene 19011 Mouse</a> <a href="#">Q3V188</a>
Background:	Endou is an endoribonuclease that cleaves single-stranded RNAs at uridyates and releases products that have 2'-3'-cyclic phosphate termini.
Synonyms:	P11; PP11; PRSS26



[View online »](#)

Product images:



WB Suggested Anti-Endou Antibody  
Titration: 1.0 ug/ml  
Positive Control: Mouse Thymus