

## Product datasheet for **TA356177**

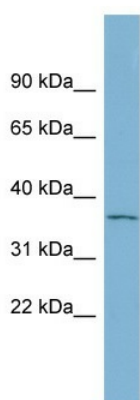
### GDF15 Rabbit Polyclonal Antibody

#### Product data:

Product Type:	Primary Antibodies
Applications:	WB
Reactivity:	Human
Host:	Rabbit
Clonality:	Polyclonal
Immunogen:	The immunogen is a synthetic peptide directed towards the N terminal region of human GDF15
Specificity:	<b>Expected reactivity:</b> Human <b>Homology:</b> Human: 100%
Formulation:	Liquid. Purified antibody supplied in 1x PBS buffer with 0.09% (w/v) sodium azide and 2% sucrose. <i>Note that this product is shipped as lyophilized powder to China customers.</i>
Concentration:	lot specific
Purification:	Affinity Purified
Conjugation:	Unconjugated
Storage:	For short term use, store at 2-8°C up to 1 week. For long term storage, store at -20°C in small aliquots to prevent freeze-thaw cycles.
Stability:	Shelf life: one year from despatch.
Predicted Protein Size:	34kDa
Gene Name:	growth differentiation factor 15
Database Link:	<a href="#">NP_004855</a> <a href="#">Entrez Gene 9518 Human</a> <a href="#">Q99988</a>
Background:	Bone morphogenetic proteins (e.g., BMP9; MIM 605120) are members of the transforming growth factor-beta (see TGFB1; MIM 190180) superfamily and regulate tissue differentiation and maintenance. They are synthesized as precursor molecules that are processed
Synonyms:	GDF-15; MIC-1; MIC1; NAG-1; NRG-1; PDF; PLAB; PTGF-beta; PTGFB
Protein Families:	Druggable Genome, Secreted Protein



[View online »](#)

**Product images:**

WB Suggested Anti-GDF15 Antibody Titration: 0.2-1 ug/ml

Positive Control: PANC1 cell lysate GDF15 is strongly supported by BioGPS gene expression data to be expressed in Human PANC1 cells