

Product datasheet for **TA356172**

Timp2 Rabbit Polyclonal Antibody

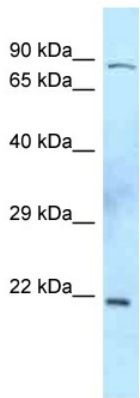
Product data:

Product Type:	Primary Antibodies
Applications:	WB
Reactivity:	Mouse
Host:	Rabbit
Clonality:	Polyclonal
Specificity:	Expected reactivity: Cow, Dog, Guinea Pig, Horse, Human, Mouse, Rabbit, Rat, Sheep, Zebrafish Homology: Cow: 100%; Dog: 100%; Guinea Pig: 100%; Horse: 100%; Human: 100%; Mouse: 100%; Rabbit: 100%; Rat: 100%; Sheep: 100%; Zebrafish: 79%
Formulation:	Liquid. Purified antibody supplied in 1x PBS buffer with 0.09% (w/v) sodium azide and 2% sucrose. <i>Note that this product is shipped as lyophilized powder to China customers.</i>
Concentration:	lot specific
Purification:	Affinity Purified
Conjugation:	Unconjugated
Storage:	For short term use, store at 2-8°C up to 1 week. For long term storage, store at -20°C in small aliquots to prevent freeze-thaw cycles.
Stability:	Shelf life: one year from despatch.
Predicted Protein Size:	24kDa
Gene Name:	tissue inhibitor of metalloproteinase 2
Database Link:	NP_035724 Entrez Gene 21858 Mouse Q8BSJ3
Background:	The function of this protein remains unknown.
Synonyms:	CSC-21K; TIMP-2



[View online »](#)

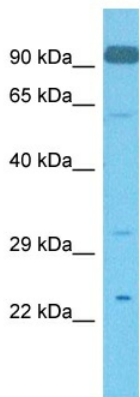
Product images:



Rabbit Anti-Timp2 Antibody
 Catalog Number: ARP42116
 Lot Number: QC12719
 Lane: Mouse Thymus Lysate

Antibody Titration: 1.0µg/ml
 Gel Concentration: 12%

WB Suggested Anti-Timp2 Antibody
 Titration: 0.1ug/ml
 Positive Control: Mouse Thymus



Host: Rabbit
 Target Name: TIMP2
 Sample Type: Mouse Testis Lysate
 Antibody Dilution: 1.0µg/ml

Host: Rabbit
 Target Name: TIMP2
 Sample Tissue: Rodent Mouse Testis
 Antibody Dilution: 1 ug/ml