

Product datasheet for **TA356169**

MMP1 Rabbit Polyclonal Antibody

Product data:

Product Type:	Primary Antibodies
Applications:	IHC, WB
Reactivity:	Human, Horse
Host:	Rabbit
Clonality:	Polyclonal
Immunogen:	The immunogen is a synthetic peptide directed towards the N terminal region of human MMP1
Specificity:	Expected reactivity: Horse, Human Homology: Horse: 77%; Human: 100%
Formulation:	Liquid. Purified antibody supplied in 1x PBS buffer with 0.09% (w/v) sodium azide and 2% sucrose. <i>Note that this product is shipped as lyophilized powder to China customers.</i>
Concentration:	lot specific
Purification:	Protein A purified
Conjugation:	Unconjugated
Storage:	For short term use, store at 2-8°C up to 1 week. For long term storage, store at -20°C in small aliquots to prevent freeze-thaw cycles.
Stability:	Shelf life: one year from despatch.
Predicted Protein Size:	54kDa
Gene Name:	matrix metalloproteinase 1
Database Link:	NP_002412 Entrez Gene 4312 Human P03956



[View online »](#)

Background:

Proteins of the matrix metalloproteinase (MMP) family are involved in the breakdown of extracellular matrix in normal physiological processes, such as embryonic development, reproduction, and tissue remodeling, as well as in disease processes, such as arthritis and metastasis. Most MMP's are secreted as inactive proproteins which are activated when cleaved by extracellular proteinases. MMP1 is a secreted enzyme which breaks down the interstitial collagens, types I, II, and III. Proteins of the matrix metalloproteinase (MMP) family are involved in the breakdown of extracellular matrix in normal physiological processes, such as embryonic development, reproduction, and tissue remodeling, as well as in disease processes, such as arthritis and metastasis. Most MMP's are secreted as inactive proproteins which are activated when cleaved by extracellular proteinases. This gene encodes a secreted enzyme which breaks down the interstitial collagens, types I, II, and III. The gene is part of a cluster of MMP genes which localize to chromosome 11q22.3.

Synonyms:

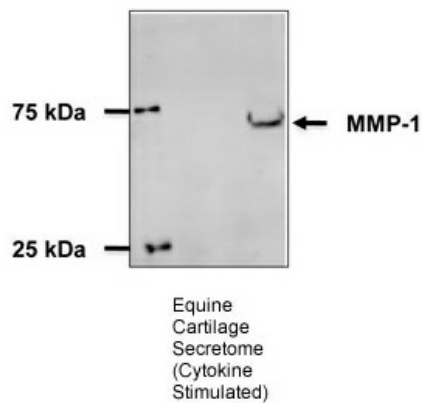
CLG; CLGN; MMP-1

Protein Families:

Druggable Genome, Protease, Secreted Protein

Protein Pathways:

Bladder cancer, Pathways in cancer, PPAR signaling pathway

Product images:

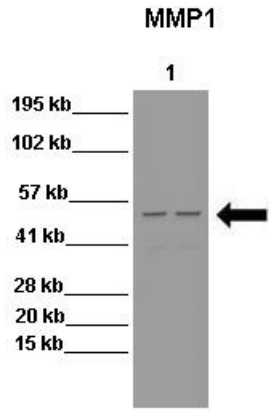
Sample Type: Equine Cartilage Explants

Primary Dilution: 1:800

Secondary Antibody: Bio-Rad 170-5046

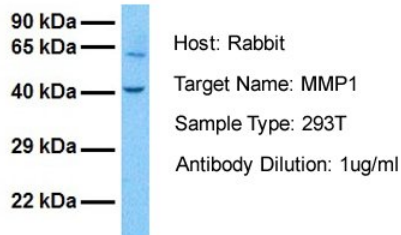
Secondary Dilution: 1:100,000

Image Submitted By: Adam Williams
University of Nottingham



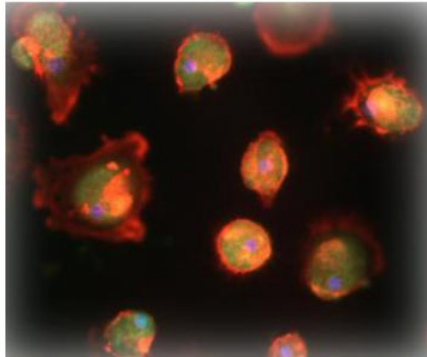
WB Suggested Anti-MMP1 Antibody
 Positive Control: Lane 1: 15ug HT29 cell lysate
 Lane 2: 15ug HT29 cell lysate
 Primary Antibody Dilution : 1:500
 Secondary Antibody : Anti-rabbit-HRP
 Secondary Antibody Dilution : 1:2000
 Submitted by: Zhongsheng Peng, School of
 Medicine, University of Maryland Baltimore

MMP1



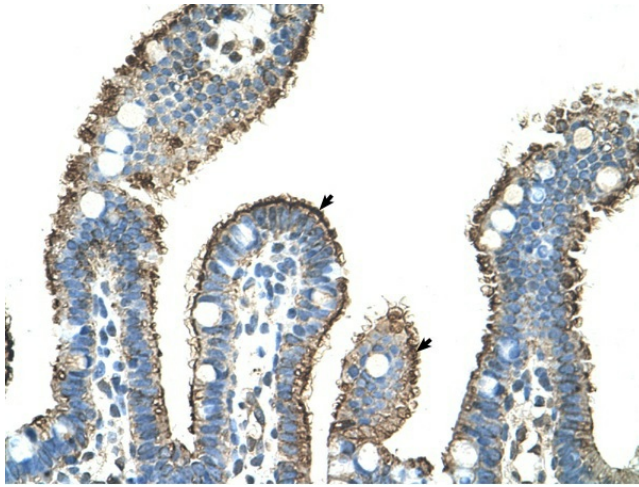
Host: Rabbit
 Target Name: MMP1
 Sample Tissue: Human 293T
 Antibody Dilution: 1.0ug/ml

MMP1

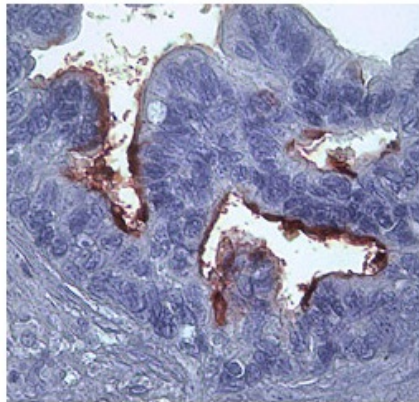


species sample : Human
 cell/tissue : macrophagesHuman macrophages
 dilution : 1/200

See Immunohistochemistry Data 1 for more information.



Rabbit Anti-MMP1 Antibody
 Catalog Number: ARP42039
 Paraffin Embedded Tissue: Human Intestine
 Cellular Data: Epithelial cells of intestinal villas
 Antibody Concentration: 4.0-8.0 ug/ml
 Magnification: 400X



MMP1 in epithelial cells ovarian carcinoma was detected using HRP/DAB brown color stain.
 Antibody Titration: 2-10ug/ml
 Positive Control: Human epithelial cells ovarian carcinoma

MMP-1



Human colorectal cancer sample

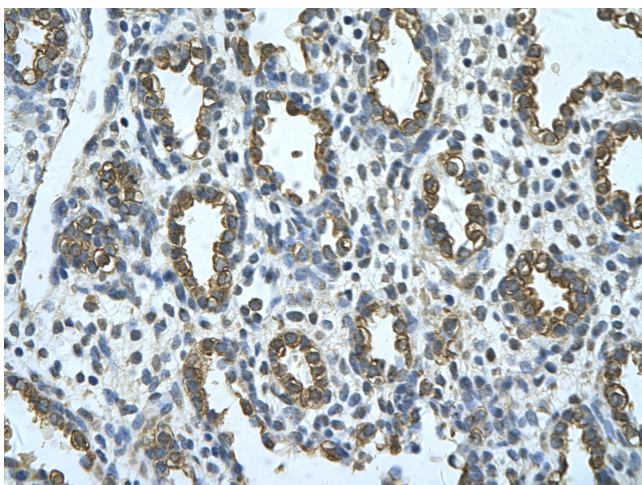


Human liver sample

Brown: Primary antibody
 Blue: DAPI

Human Colorectal cancer sample
 Human Liver Sample

See IHC 4 Data and Customer Feedback for more information



Rabbit Anti-MMP1 Antibody
Catalog Number: ARP42039
Paraffin Embedded Tissue: Human alveolar cell
Cellular Data: Epithelial cells of renal tubule
Antibody Concentration: 4.0-8.0 ug/ml
Magnification: 400X