

Product datasheet for **TA356168**

Dpt Rabbit Polyclonal Antibody

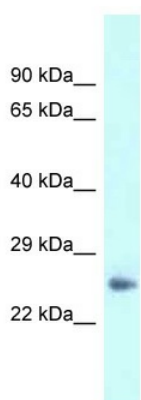
Product data:

Product Type:	Primary Antibodies
Applications:	WB
Reactivity:	Mouse
Host:	Rabbit
Clonality:	Polyclonal
Specificity:	Expected reactivity: Cow, Dog, Guinea Pig, Horse, Human, Mouse, Rabbit, Rat, Zebrafish Homology: Cow: 93%; Dog: 93%; Guinea Pig: 93%; Horse: 93%; Human: 100%; Mouse: 100%; Rabbit: 93%; Rat: 100%; Zebrafish: 85%
Formulation:	Liquid. Purified antibody supplied in 1x PBS buffer with 0.09% (w/v) sodium azide and 2% sucrose. <i>Note that this product is shipped as lyophilized powder to China customers.</i>
Concentration:	lot specific
Purification:	Affinity Purified
Conjugation:	Unconjugated
Storage:	For short term use, store at 2-8°C up to 1 week. For long term storage, store at -20°C in small aliquots to prevent freeze-thaw cycles.
Stability:	Shelf life: one year from despatch.
Predicted Protein Size:	24kDa
Gene Name:	dermatopontin
Database Link:	NP_062733 Entrez Gene 56429 Mouse Q9QZZ6
Background:	Dpt seems to mediate adhesion by cell surface integrin binding. It may serve as a communication link between the dermal fibroblast cell surface and its extracellular matrix environment. It enhances TGFB1 activity and inhibits cell proliferation. Dpt accelerates collagen fibril formation, and stabilizes collagen fibrils against low-temperature dissociation.
Synonyms:	dermatopontin; TRAMP



[View online »](#)

Product images:



WB Suggested Anti-Dpt Antibody
Titration: 1.0 ug/ml
Positive Control: Mouse Pancreas