

Product datasheet for TA356157

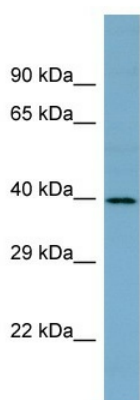
CYP4A22 Rabbit Polyclonal Antibody

Product data:

Product Type:	Primary Antibodies
Applications:	WB
Reactivity:	Human
Host:	Rabbit
Clonality:	Polyclonal
Immunogen:	The immunogen is a synthetic peptide directed towards the N-terminal region of Human CYP4A22
Specificity:	Expected reactivity: Human Homology: Human: 100%
Formulation:	Liquid. Purified antibody supplied in 1x PBS buffer with 0.09% (w/v) sodium azide and 2% sucrose. <i>Note that this product is shipped as lyophilized powder to China customers.</i>
Concentration:	lot specific
Purification:	Affinity Purified
Conjugation:	Unconjugated
Storage:	For short term use, store at 2-8°C up to 1 week. For long term storage, store at -20°C in small aliquots to prevent freeze-thaw cycles.
Stability:	Shelf life: one year from despatch.
Predicted Protein Size:	39kDa
Gene Name:	cytochrome P450 family 4 subfamily A member 22
Database Link:	Entrez Gene 284541 Human Q5TCH4-2
Background:	CYP4A22 is a member of the cytochrome P450 superfamily of enzymes. The cytochrome P450 proteins are monooxygenases which catalyze many reactions involved in drug metabolism and synthesis of cholesterol, steroids and other lipids.
Synonyms:	CYPIVA22



[View online »](#)

Product images:

Host: Rabbit

Target Name: CYP4A22

Sample Type: NCI-H226 Whole Cell lysates

Antibody Dilution: 1.0ug/ml CYP4A22 is supported by BioGPS gene expression data to be expressed in NCIH226