

Product datasheet for TA356156

Otc Rabbit Polyclonal Antibody

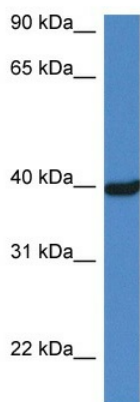
Product data:

Product Type:	Primary Antibodies
Applications:	WB
Reactivity:	Mouse
Host:	Rabbit
Clonality:	Polyclonal
Specificity:	Expected reactivity: Cow, Dog, Goat, Guinea Pig, Horse, Human, Mouse, Pig, Rabbit, Rat, Sheep, Yeast, Zebrafish Homology: Cow: 100%; Dog: 100%; Goat: 100%; Guinea Pig: 93%; Horse: 100%; Human: 100%; Mouse: 100%; Pig: 100%; Rabbit: 100%; Rat: 100%; Sheep: 93%; Yeast: 100%; Zebrafish: 93%
Formulation:	Liquid. Purified antibody supplied in 1x PBS buffer with 0.09% (w/v) sodium azide and 2% sucrose. <i>Note that this product is shipped as lyophilized powder to China customers.</i>
Concentration:	lot specific
Purification:	Affinity Purified
Conjugation:	Unconjugated
Storage:	For short term use, store at 2-8°C up to 1 week. For long term storage, store at -20°C in small aliquots to prevent freeze-thaw cycles.
Stability:	Shelf life: one year from despatch.
Predicted Protein Size:	40kDa
Gene Name:	ornithine transcarbamylase
Database Link:	NP_032795 Entrez Gene 18416 Mouse P11725
Background:	The function of this protein remains unknown.
Synonyms:	MGC129967; MGC129968; MGC138856; OCTD; OTCase

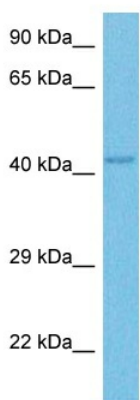


[View online »](#)

Product images:



WB Suggested Anti-Otc Antibody
Titration: 1.0 ug/ml
Positive Control: Mouse Liver



Host: Rabbit
Target Name: OTC
Sample Type: Mouse Skeletal Muscle Lysate
Antibody Dilution: 1.0µg/ml

Host: Rabbit
Target Name: OTC
Sample Tissue: Mouse Skeletal Muscle
Antibody Dilution: 1 ug/ml