

Product datasheet for **TA356154**

COMP Rabbit Polyclonal Antibody

Product data:

Product Type:	Primary Antibodies
Applications:	WB
Reactivity:	Human
Host:	Rabbit
Clonality:	Polyclonal
Immunogen:	The immunogen is a synthetic peptide directed towards the N-terminal region of Human COMP
Specificity:	Expected reactivity: Cow, Dog, Horse, Human, Mouse, Pig, Rat Homology: Cow: 93%; Dog: 100%; Horse: 100%; Human: 100%; Mouse: 100%; Pig: 100%; Rat: 100%
Formulation:	Liquid. Purified antibody supplied in 1x PBS buffer with 0.09% (w/v) sodium azide and 2% sucrose. <i>Note that this product is shipped as lyophilized powder to China customers.</i>
Concentration:	lot specific
Purification:	Affinity Purified
Conjugation:	Unconjugated
Storage:	For short term use, store at 2-8°C up to 1 week. For long term storage, store at -20°C in small aliquots to prevent freeze-thaw cycles.
Stability:	Shelf life: one year from despatch.
Predicted Protein Size:	83kDa
Gene Name:	cartilage oligomeric matrix protein
Database Link:	NP_000086 Entrez Gene 1311 Human P49747



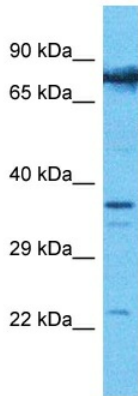
[View online »](#)

Background:

The protein encoded by this gene is a noncollagenous extracellular matrix (ECM) protein. It consists of five identical glycoprotein subunits, each with EGF-like and calcium-binding (thrombospondin-like) domains. Oligomerization results from formation of a five-stranded coiled coil and disulfides. Binding to other ECM proteins such as collagen appears to depend on divalent cations. Mutations can cause the osteochondrodysplasias pseudoachondroplasia (PSACH) and multiple epiphyseal dysplasia (MED).

Synonyms:

EDM1; EPD1; MED; MGC131819; MGC149768; PSACH; THBS5; thrombospondin-5; TSP5

Product images:


Host: Rabbit
 Target Name: COMP
 Sample Tissue: 786-0 Cell Lysate
 Antibody Dilution: 1.0µg/ml

Host: Rabbit
 Target Name: COMP
 Sample Type: 786-0 Whole Cell lysates
 Antibody Dilution: 1.0ug/ml