

## Product datasheet for **TA356143**

### HRC Rabbit Polyclonal Antibody

#### Product data:

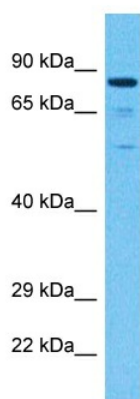
Product Type:	Primary Antibodies
Applications:	WB
Reactivity:	Human
Host:	Rabbit
Clonality:	Polyclonal
Immunogen:	The immunogen is a synthetic peptide directed towards the C-terminal region of Human SRCH
Specificity:	<b>Expected reactivity:</b> Cow, Dog, Goat, Guinea Pig, Horse, Human, Mouse, Rabbit, Rat, Yeast <b>Homology:</b> Cow: 90%; Dog: 90%; Goat: 90%; Guinea Pig: 100%; Horse: 90%; Human: 100%; Mouse: 90%; Rabbit: 82%; Rat: 90%; Yeast: 90%
Formulation:	Liquid. Purified antibody supplied in 1x PBS buffer with 0.09% (w/v) sodium azide and 2% sucrose. <i>Note that this product is shipped as lyophilized powder to China customers.</i>
Concentration:	lot specific
Purification:	Affinity purified
Conjugation:	Unconjugated
Storage:	For short term use, store at 2-8°C up to 1 week. For long term storage, store at -20°C in small aliquots to prevent freeze-thaw cycles.
Stability:	Shelf life: one year from despatch.
Predicted Protein Size:	76kDa
Gene Name:	histidine rich calcium binding protein
Database Link:	<a href="#">NP_002143</a> <a href="#">Entrez Gene 3270 Human P23327</a>
Background:	This gene encodes a luminal sarcoplasmic reticulum protein identified by its ability to bind low-density lipoprotein with high affinity. The protein interacts with the cytoplasmic domain of triadin, the main transmembrane protein of the junctional sarcoplasmic reticulum (SR) of skeletal muscle. The protein functions in the regulation of releasable calcium into the SR.



[View online »](#)

Synonyms: HCP; MGC133236

### Product images:



Host: Rabbit  
Target Name: SRCH  
Sample Tissue: 293T Cell Lysate  
Antibody Dilution: 1.0 $\mu$ g/ml

Host: Rabbit  
Target Name: SRCH  
Sample Type: 293T Whole Cell lysates  
Antibody Dilution: 1.0 $\mu$ g/ml