

Product datasheet for **TA356142**

Ctsd Rabbit Polyclonal Antibody

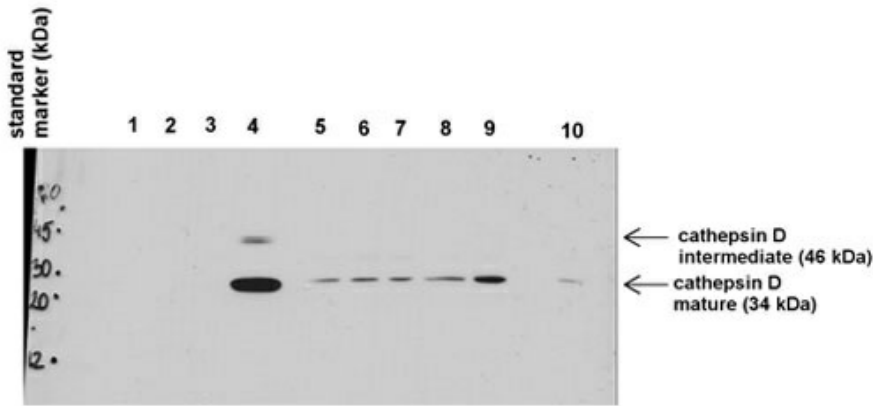
Product data:

Product Type:	Primary Antibodies
Applications:	WB
Reactivity:	Human, Mouse
Host:	Rabbit
Clonality:	Polyclonal
Immunogen:	The immunogen is a synthetic peptide corresponding to a region of Mouse
Specificity:	Expected reactivity: Cow, Dog, Guinea Pig, Horse, Human, Mouse, Rabbit, Rat, Yeast, Zebrafish Homology: Cow: 86%; Dog: 79%; Guinea Pig: 93%; Horse: 86%; Human: 100%; Mouse: 100%; Rabbit: 93%; Rat: 93%; Yeast: 92%; Zebrafish: 92%
Formulation:	Liquid. Purified antibody supplied in 1x PBS buffer with 0.09% (w/v) sodium azide and 2% sucrose. <i>Note that this product is shipped as lyophilized powder to China customers.</i>
Concentration:	lot specific
Purification:	Affinity Purified
Conjugation:	Unconjugated
Storage:	For short term use, store at 2-8°C up to 1 week. For long term storage, store at -20°C in small aliquots to prevent freeze-thaw cycles.
Stability:	Shelf life: one year from despatch.
Predicted Protein Size:	45kDa
Gene Name:	cathepsin D
Database Link:	NP_034113 Entrez Gene 1509 Human Entrez Gene 13033 Mouse P18242
Background:	Ctsd is an acid protease active in intracellular protein breakdown.
Synonyms:	CLN10; CPSD; MGC2311

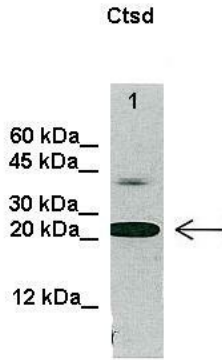


[View online »](#)

Product images:

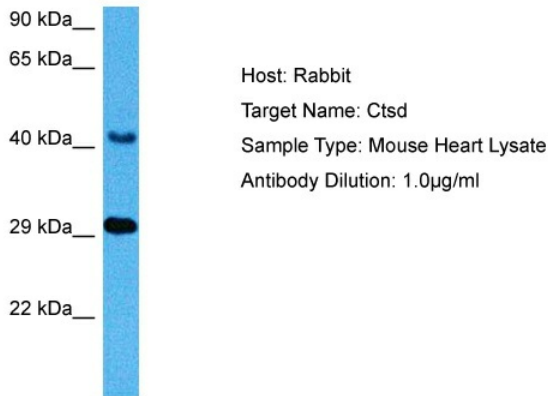


Primary dilution: 1ug/mL
Secondary dilution: 2mg/mL



Lanes:
20 ug U937 cell lysate
Primary Antibody Dilution:
1:1000
Secondary Antibody:
Anti-rabbit HRP
Secondary Antibody Dilution:
1:2000
Gene Name:
Ctsd
Submitted by:
Ewelina Swiderek, Institute of Immunology and
Experimental Therapy, Wroclaw, Poland

See Immunoblot 3 Data and Customer Feedback for more information



Host: Mouse
Target Name: CTSD
Sample Tissue: Mouse Heart
Antibody Dilution: 1ug/ml