

Product datasheet for **TA356137**

Insr Rabbit Polyclonal Antibody

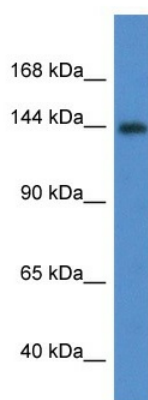
Product data:

Product Type:	Primary Antibodies
Applications:	WB
Reactivity:	Human, Mouse
Host:	Rabbit
Clonality:	Polyclonal
Immunogen:	The immunogen is a synthetic peptide corresponding to a region of Mouse
Specificity:	Expected reactivity: Cow, Dog, Guinea Pig, Horse, Human, Mouse, Rabbit, Rat, Sheep Homology: Cow: 100%; Dog: 100%; Guinea Pig: 100%; Horse: 100%; Human: 100%; Mouse: 100%; Rabbit: 100%; Rat: 100%; Sheep: 100%
Formulation:	Liquid. Purified antibody supplied in 1x PBS buffer with 0.09% (w/v) sodium azide and 2% sucrose. <i>Note that this product is shipped as lyophilized powder to China customers.</i>
Concentration:	lot specific
Purification:	Affinity Purified
Conjugation:	Unconjugated
Storage:	For short term use, store at 2-8°C up to 1 week. For long term storage, store at -20°C in small aliquots to prevent freeze-thaw cycles.
Stability:	Shelf life: one year from despatch.
Predicted Protein Size:	155kDa
Gene Name:	insulin receptor
Database Link:	NP_034698 Entrez Gene 3643 Human Entrez Gene 16337 Mouse P15208
Background:	This receptor binds insulin and has a tyrosine-protein kinase activity. When it is present in a hybrid receptor with IGF1R, binds IGF1.
Synonyms:	CD220; HHF5; IR

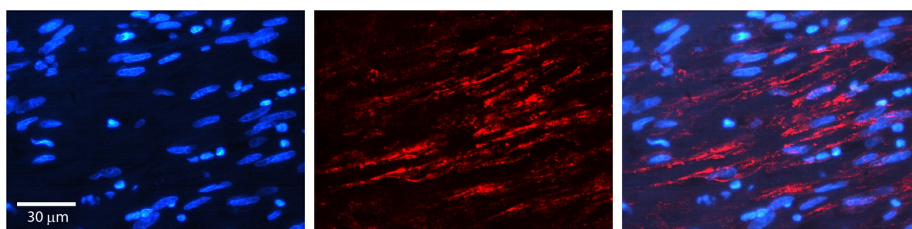


[View online »](#)

Product images:



WB Suggested Anti-Insr Antibody
Titration: 1.0 ug/ml
Positive Control: Mouse Pancreas



Rabbit Anti-INSR Antibody
Catalog Number: TA356137
Formalin Fixed Paraffin Embedded Tissue:
Human Ovary Tissue
Observed Staining: Plasma membrane
Primary Antibody Concentration: 1:100
Other Working Concentrations: N/A
Secondary Antibody: Donkey anti-Rabbit-Cy3
Secondary Antibody Concentration: 1:200
Magnification: 20X
Exposure Time: 0.5-2.0 sec