

Product datasheet for **TA356136**

ELAC2 Rabbit Polyclonal Antibody

Product data:

Product Type:	Primary Antibodies
Applications:	WB
Reactivity:	Human
Host:	Rabbit
Clonality:	Polyclonal
Immunogen:	The immunogen is a synthetic peptide directed towards the C-terminal region of Human ELAC2
Specificity:	Expected reactivity: Dog, Human, Mouse, Rat Homology: Dog: 100%; Human: 100%; Mouse: 83%; Rat: 83%
Formulation:	Liquid. Purified antibody supplied in 1x PBS buffer with 0.09% (w/v) sodium azide and 2% sucrose. <i>Note that this product is shipped as lyophilized powder to China customers.</i>
Concentration:	lot specific
Purification:	Affinity Purified
Conjugation:	Unconjugated
Storage:	For short term use, store at 2-8°C up to 1 week. For long term storage, store at -20°C in small aliquots to prevent freeze-thaw cycles.
Stability:	Shelf life: one year from despatch.
Predicted Protein Size:	55kDa
Gene Name:	elaC ribonuclease Z 2
Database Link:	Entrez Gene 60528 Human Q9BQ52-2



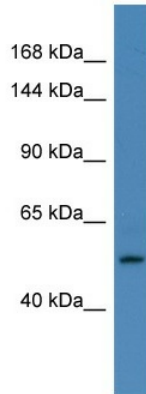
[View online »](#)

Background:

The protein encoded by this gene has a C-terminal domain with tRNA 3' processing endoribonuclease activity, which catalyzes the removal of the 3' trailer from precursor tRNAs. The protein also interacts with activated Smad family member 2 (Smad2) and its nuclear partner forkhead box H1 (also known as FAST-1), and reduced expression can suppress transforming growth factor-beta induced growth arrest. Mutations in this gene result in an increased risk of prostate cancer. Multiple transcript variants encoding different isoforms have been found for this gene.

Synonyms:

ELC2; FLJ10530; FLJ36693; FLJ42848; HPC2

Product images:

Host: Rabbit

Target Name: ELAC2

Sample Type: HepG2 Whole cell lysates

Antibody Dilution: 1.0ug/ml ELAC2 is supported by BioGPS gene expression data to be expressed in HepG2