

Product datasheet for **TA356131**

WDR7 Rabbit Polyclonal Antibody

Product data:

Product Type:	Primary Antibodies
Applications:	WB
Reactivity:	Human
Host:	Rabbit
Clonality:	Polyclonal
Immunogen:	The immunogen is a synthetic peptide directed towards the C-terminal region of Human WDR7
Specificity:	Expected reactivity: Cow, Dog, Guinea Pig, Horse, Human, Mouse, Rabbit, Rat, Zebrafish Homology: Cow: 100%; Dog: 100%; Guinea Pig: 100%; Horse: 100%; Human: 100%; Mouse: 100%; Rabbit: 100%; Rat: 100%; Zebrafish: 93%
Formulation:	Liquid. Purified antibody supplied in 1x PBS buffer with 0.09% (w/v) sodium azide and 2% sucrose.
Concentration:	lot specific
Purification:	Affinity purified
Conjugation:	Unconjugated
Storage:	For short term use, store at 2-8°C up to 1 week. For long term storage, store at -20°C in small aliquots to prevent freeze-thaw cycles.
Stability:	Shelf life: one year from despatch.
Predicted Protein Size:	163kDa
Gene Name:	WD repeat domain 7
Database Link:	XP_006722494 Entrez Gene 23335 Human Q9Y4E6



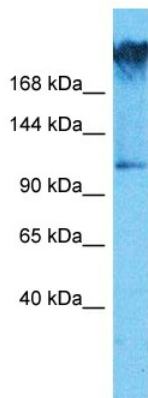
[View online »](#)

Background:

This gene encodes a member of the WD repeat protein family. WD repeats are minimally conserved regions of approximately 40 amino acids typically bracketed by gly-his and trp-asp (GH-WD) that may facilitate formation of heterotrimeric or multiprotein complexes. Members of this family are involved in a variety of cellular processes, including cell cycle progression, signal transduction, apoptosis, and gene regulation. The encoded protein forms the beta subunit of rabconnectin-3 and binds directly with Rab3A GDP/GTP exchange protein and indirectly with Rab3A GDP/GTP activating protein; these proteins are regulators of Rab3 small G protein family members involved in control of the calcium-dependant exocytosis of neurotransmitters. Alternatively spliced transcript variants encoding different isoforms have been described.

Synonyms:

KIAA0541; OTTHUMP00000163596; TRAG

Product images:


Host: Rabbit
 Target Name: WDR7
 Sample Tissue: COLO205 Cell Lysate
 Antibody Dilution: 1.0µg/ml

Host: Rabbit
 Target Name: WDR7
 Sample Type: COLO205 Whole Cell lysates
 Antibody Dilution: 1.0ug/ml



Host: Rabbit
 Target Name: WDR7
 Sample Type: 786-0 Cell Lysate
 Antibody Dilution: 1.0µg/ml

Host: Rabbit
 Target Name: WDR7
 Sample Tissue: Human 786-0 Whole Cell
 Antibody Dilution: 3ug/ml