

Product datasheet for **TA356128**

Frizzled 10 (FZD10) Rabbit Polyclonal Antibody

Product data:

Product Type:	Primary Antibodies
Applications:	IF
Reactivity:	Human
Host:	Rabbit
Clonality:	Polyclonal
Immunogen:	The immunogen is a synthetic peptide directed towards the following sequence GMWIWTSKTLQSWQQVCSRRLLKKSRKRPASVITSGGIYKKAQHPQKTHH
Specificity:	Expected reactivity: Cow, Dog, Horse, Human, Mouse, Pig Homology: Cow: 92%; Dog: 92%; Horse: 92%; Human: 100%; Mouse: 92%; Pig: 100%
Formulation:	Liquid. Purified antibody supplied in 1x PBS buffer with 0.09% (w/v) sodium azide and 2% sucrose. <i>Note that this product is shipped as lyophilized powder to China customers.</i>
Concentration:	lot specific
Purification:	Affinity Purified
Conjugation:	Unconjugated
Storage:	For short term use, store at 2-8°C up to 1 week. For long term storage, store at -20°C in small aliquots to prevent freeze-thaw cycles.
Stability:	Shelf life: one year from despatch.
Predicted Protein Size:	65 kDa
Gene Name:	frizzled class receptor 10
Database Link:	NP_009128 Entrez Gene 11211 Human Q9ULW2
Background:	This gene is a member of the frizzled gene family. Members of this family encode 7-transmembrane domain proteins that are receptors for the Wntless type MMTV integration site family of signaling proteins. Most frizzled receptors are coupled to the beta-catenin canonical signaling pathway. Using array analysis, expression of this intronless gene is significantly up-regulated in two cases of primary colon cancer.



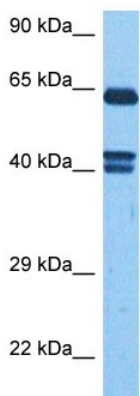
[View online »](#)

Synonyms: CD350; FZ-10; FzE7; hFz10

Protein Families: Druggable Genome, GPCR, Transmembrane

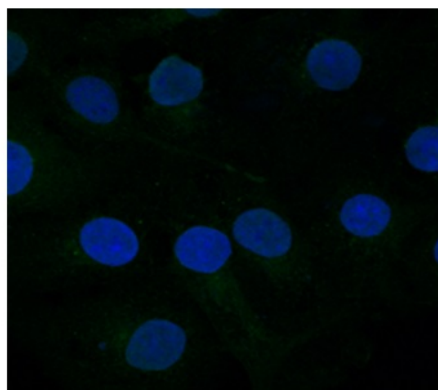
Protein Pathways: Basal cell carcinoma, Colorectal cancer, Melanogenesis, Pathways in cancer, Wnt signaling pathway

Product images:

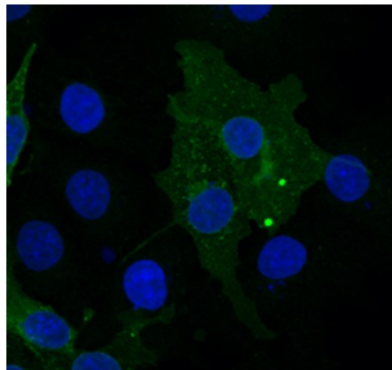


Host: Rabbit
 Target Name: FZD10
 Sample Type: MCF7 Cell Lysate
 Antibody Dilution: 0.5µg/ml

Host: Rabbit
 Target Name: FZD10
 Sample Tissue: Human MCF7 Whole Cell
 Antibody Dilution: 1ug/ml



TA356128 FZD10 Antibody
 Sample type: COS7 cells mock transfected
 Primary Ab dilution: 1:333
 Secondary Ab: anti-rabbit-Cy2
 Secondary Ab dilution: 1:500
 Blue: DAPI
 Green:FZD10
 Data submitted by: Lisa Galli/Laura Burrus
 San Francisco State University



TA356128 FZD10 Antibody
Sample type: COS7 cells transfected with chick FZD10
Primary Ab dilution: 1:333
Secondary Ab: anti-rabbit-Cy2
Secondary Ab dilution: 1:500
Blue: DAPI
Green:FZD10
Data submitted by: Lisa Galli/Laura Burrus
San Francisco State University