

Product datasheet for **TA356126**

C14ORF21 (NOP9) Rabbit Polyclonal Antibody

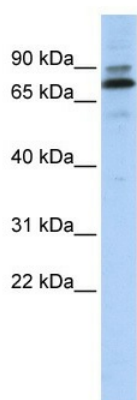
Product data:

Product Type:	Primary Antibodies
Applications:	WB
Reactivity:	Human
Host:	Rabbit
Clonality:	Polyclonal
Immunogen:	The immunogen is a synthetic peptide directed towards the middle region of human C14orf21
Specificity:	Expected reactivity: Cow, Human, Mouse, Rabbit, Rat Homology: Cow: 85%; Human: 100%; Mouse: 83%; Rabbit: 92%; Rat: 83%
Formulation:	Liquid. Purified antibody supplied in 1x PBS buffer with 0.09% (w/v) sodium azide and 2% sucrose.
Concentration:	lot specific
Purification:	Affinity Purified
Conjugation:	Unconjugated
Storage:	For short term use, store at 2-8°C up to 1 week. For long term storage, store at -20°C in small aliquots to prevent freeze-thaw cycles.
Stability:	Shelf life: one year from despatch.
Predicted Protein Size:	69kDa
Gene Name:	NOP9 nucleolar protein
Database Link:	NP_777573 Entrez Gene 161424 Human Q86U38
Background:	The specific function of C14orf21 is not yet known.
Synonyms:	C14orf21



[View online »](#)

Product images:



WB Suggested Anti-C14orf21 Antibody Titration:
0.2-1 ug/ml
ELISA Titer: 1:312500
Positive Control: Hela cell lysate