

Product datasheet for TA356124

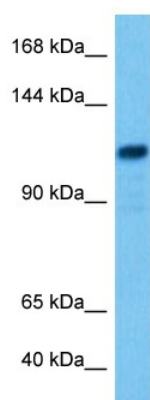
DIS3L Rabbit Polyclonal Antibody

Product data:

Product Type:	Primary Antibodies
Applications:	WB
Reactivity:	Human
Host:	Rabbit
Clonality:	Polyclonal
Immunogen:	The immunogen is a synthetic peptide directed towards the C terminal region of human DIS3L
Specificity:	Expected reactivity: Human Homology: Cow: 93%; Dog: 93%; Guinea Pig: 86%; Horse: 93%; Human: 100%; Mouse: 86%; Rat: 93%; Zebrafish: 85%
Formulation:	Liquid. Purified antibody supplied in 1x PBS buffer with 0.09% (w/v) sodium azide and 2% sucrose.
Concentration:	lot specific
Purification:	Affinity purified
Conjugation:	Unconjugated
Storage:	For short term use, store at 2-8°C up to 1 week. For long term storage, store at -20°C in small aliquots to prevent freeze-thaw cycles.
Stability:	Shelf life: one year from despatch.
Predicted Protein Size:	115 kDa
Gene Name:	DIS3 like exosome 3'-5' exoribonuclease
Database Link:	NP_588616 Entrez Gene 115752 Human Q8TF46
Background:	The cytoplasmic RNA exosome complex degrades unstable mRNAs and is involved in the regular turnover of other mRNAs. The protein encoded by this gene contains 3'-5' exoribonuclease activity and is a catalytic component of this complex.Â
Synonyms:	FLJ38088; KIAA1955; MGC4562



[View online »](#)

Product images:

Host: Rabbit
Target Name: DIS3L
Sample Type: MCF7 Cell Lysate
Antibody Dilution: 1.0 μ g/ml

Host: Rabbit
Target Name: DIS3L
Sample Tissue: Human MCF7 Whole Cell lysates
Antibody Dilution: 1 ug/ml