

## Product datasheet for TA356121

### SNX1 Rabbit Polyclonal Antibody

#### Product data:

Product Type:	Primary Antibodies
Applications:	IHC, WB
Reactivity:	Human
Host:	Rabbit
Clonality:	Polyclonal
Immunogen:	The immunogen is a synthetic peptide directed towards the C-terminal region of Human SNX1
Specificity:	<b>Expected reactivity:</b> Cow, Dog, Guinea Pig, Horse, Human, Mouse, Pig, Rabbit, Rat, Yeast, Zebrafish <b>Homology:</b> Cow: 91%; Dog: 91%; Guinea Pig: 91%; Horse: 93%; Human: 100%; Mouse: 91%; Pig: 92%; Rabbit: 91%; Rat: 91%; Yeast: 91%; Zebrafish: 75%
Formulation:	Liquid. Purified antibody supplied in 1x PBS buffer with 0.09% (w/v) sodium azide and 2% sucrose. <i>Note that this product is shipped as lyophilized powder to China customers.</i>
Concentration:	lot specific
Purification:	Affinity Purified
Conjugation:	Unconjugated
Storage:	For short term use, store at 2-8°C up to 1 week. For long term storage, store at -20°C in small aliquots to prevent freeze-thaw cycles.
Stability:	Shelf life: one year from despatch.
Predicted Protein Size:	59kDa
Gene Name:	sorting nexin 1
Database Link:	<a href="#">NP_683758</a> <a href="#">Entrez Gene 6642 Human</a> <a href="#">Q13596</a>



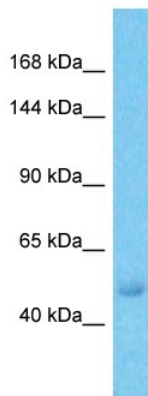
[View online »](#)

**Background:**

This gene encodes a member of the sorting nexin family. Members of this family contain a phox (PX) domain, which is a phosphoinositide binding domain, and are involved in intracellular trafficking. This endosomal protein regulates the cell-surface expression of epidermal growth factor receptor. This protein also has a role in sorting protease-activated receptor-1 from early endosomes to lysosomes. This protein may form oligomeric complexes with family members. This gene results in three transcript variants encoding distinct isoforms.

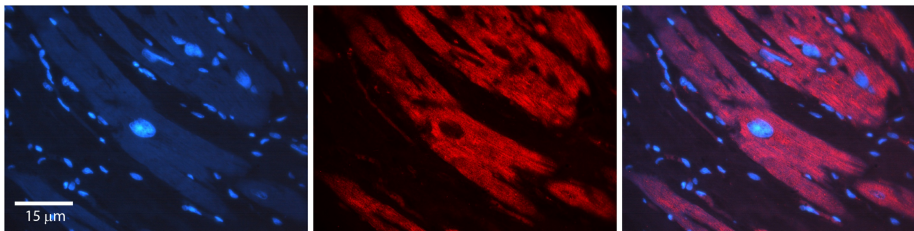
**Synonyms:**

HsT17379; MGC8664; SNX1A; Vps5

**Product images:**


Host: Rabbit  
 Target Name: SNX1  
 Sample Tissue: Lymph Node Tumor Lysate  
 Antibody Dilution: 1.0µg/ml

Host: Rabbit  
 Target Name: SNX1  
 Sample Type: Lymph Node Tumor lysates  
 Antibody Dilution: 1.0ug/ml



Rabbit Anti-SNX1 Antibody  
 Catalog Number: TA356121  
 Formalin Fixed Paraffin Embedded Tissue:  
 Human heart Tissue  
 Observed Staining: Cytoplasmic  
 Primary Antibody Concentration: 1:100  
 Other Working Concentrations: N/A  
 Secondary Antibody: Donkey anti-Rabbit-Cy3  
 Secondary Antibody Concentration: 1:200  
 Magnification: 20X  
 Exposure Time: 0.5–2.0 sec