

## Product datasheet for **TA356113**

### Scaf8 Rabbit Polyclonal Antibody

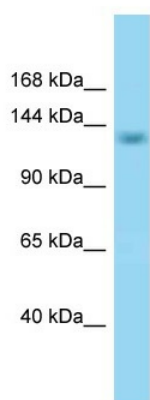
#### Product data:

Product Type:	Primary Antibodies
Applications:	WB
Reactivity:	Mouse
Host:	Rabbit
Clonality:	Polyclonal
Specificity:	<b>Expected reactivity:</b> Cow, Dog, Horse, Human, Mouse, Pig, Rabbit, Rat, Zebrafish <b>Homology:</b> Cow: 100%; Dog: 100%; Horse: 100%; Human: 100%; Mouse: 100%; Pig: 100%; Rabbit: 100%; Rat: 100%; Zebrafish: 86%
Formulation:	Liquid. Purified antibody supplied in 1x PBS buffer with 0.09% (w/v) sodium azide and 2% sucrose. <i>Note that this product is shipped as lyophilized powder to China customers.</i>
Concentration:	lot specific
Purification:	Affinity Purified
Conjugation:	Unconjugated
Storage:	For short term use, store at 2-8°C up to 1 week. For long term storage, store at -20°C in small aliquots to prevent freeze-thaw cycles.
Stability:	Shelf life: one year from despatch.
Predicted Protein Size:	139kDa
Gene Name:	SR-related CTD-associated factor 8
Database Link:	<a href="#">NP_598884</a> <a href="#">Entrez Gene 106583 Mouse</a> <a href="#">Q6DID3</a>
Background:	Scaf8 may play a role in mRNA processing.
Synonyms:	A630086M08Rik; A930036P18Rik; AA408306; AI447644; AI448652; AU015035; mKIAA1116; Rbm16



[View online »](#)

## Product images:



WB Suggested Anti-Scaf8 Antibody  
Titration: 1.0 ug/ml  
Positive Control: Mouse Kidney