

## Product datasheet for **TA356112**

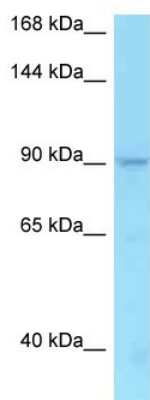
### TMEM63A Rabbit Polyclonal Antibody

#### Product data:

Product Type:	Primary Antibodies
Applications:	WB
Reactivity:	Human
Host:	Rabbit
Clonality:	Polyclonal
Specificity:	<b>Expected reactivity:</b> Cow, Horse, Human, Mouse, Rabbit, Rat <b>Homology:</b> Cow: 86%; Horse: 93%; Human: 100%; Mouse: 93%; Rabbit: 79%; Rat: 82%
Formulation:	Liquid. Purified antibody supplied in 1x PBS buffer with 0.09% (w/v) sodium azide and 2% sucrose. <i>Note that this product is shipped as lyophilized powder to China customers.</i>
Concentration:	lot specific
Purification:	Affinity Purified
Conjugation:	Unconjugated
Storage:	For short term use, store at 2-8°C up to 1 week. For long term storage, store at -20°C in small aliquots to prevent freeze-thaw cycles.
Stability:	Shelf life: one year from despatch.
Predicted Protein Size:	92kDa
Gene Name:	transmembrane protein 63A
Database Link:	<a href="#">NP_055513</a> <a href="#">Entrez Gene 9725 Human</a> <a href="#">O94886</a>
Background:	TMEM63A is a multi-pass membrane proteinPotential. It belongs to the SPO75/TMEM63 family. The exact function of TMEM63A remains unknown.
Synonyms:	KIAA0489; KIAA0792
Protein Families:	Transmembrane



[View online »](#)

**Product images:**

WB Suggested Anti-TMEM63A Antibody  
Titration: 1.0 ug/ml  
Positive Control: PANC1 Whole Cell  
There is BioGPS gene expression data showing that  
TMEM63A is expressed in PANC1