

Product datasheet for **TA356110**

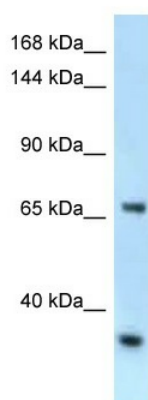
Rbm15b Rabbit Polyclonal Antibody

Product data:

Product Type:	Primary Antibodies
Applications:	WB
Reactivity:	Mouse
Host:	Rabbit
Clonality:	Polyclonal
Specificity:	Expected reactivity: Cow, Dog, Guinea Pig, Human, Mouse, Pig, Rabbit, Rat Homology: Cow: 100%; Dog: 93%; Guinea Pig: 93%; Human: 100%; Mouse: 100%; Pig: 100%; Rabbit: 79%; Rat: 100%
Formulation:	Liquid. Purified antibody supplied in 1x PBS buffer with 0.09% (w/v) sodium azide and 2% sucrose. <i>Note that this product is shipped as lyophilized powder to China customers.</i>
Concentration:	lot specific
Purification:	Affinity Purified
Conjugation:	Unconjugated
Storage:	For short term use, store at 2-8°C up to 1 week. For long term storage, store at -20°C in small aliquots to prevent freeze-thaw cycles.
Stability:	Shelf life: one year from despatch.
Predicted Protein Size:	62kDa
Gene Name:	RNA binding motif protein 15B
Database Link:	NP_780611 Entrez Gene 109095 Mouse Q6PHZ5
Background:	Rbm15b may function in the regulation of alternative or illicit splicing.
Synonyms:	HUMAGCGB; huOTT3; OTT3



[View online »](#)

Product images:

WB Suggested Anti-Rbm15b Antibody
Titration: 1.0 ug/ml
Positive Control: Mouse Heart