

## Product datasheet for **TA356107**

### NSF Rabbit Polyclonal Antibody

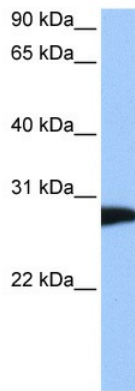
#### Product data:

Product Type:	Primary Antibodies
Applications:	IHC, WB
Reactivity:	Human, Mouse
Host:	Rabbit
Clonality:	Polyclonal
Immunogen:	The immunogen is a synthetic peptide directed towards the C terminal region of human NSF
Specificity:	<b>Expected reactivity:</b> Cow, Dog, Guinea Pig, Horse, Human, Mouse, Pig, Rabbit, Rat, Zebrafish <b>Homology:</b> Cow: 86%; Dog: 93%; Guinea Pig: 93%; Horse: 100%; Human: 100%; Mouse: 100%; Pig: 100%; Rabbit: 100%; Rat: 100%; Zebrafish: 86%
Formulation:	Liquid. Purified antibody supplied in 1x PBS buffer with 0.09% (w/v) sodium azide and 2% sucrose. <i>Note that this product is shipped as lyophilized powder to China customers.</i>
Concentration:	lot specific
Purification:	Affinity Purified
Conjugation:	Unconjugated
Storage:	For short term use, store at 2-8°C up to 1 week. For long term storage, store at -20°C in small aliquots to prevent freeze-thaw cycles.
Stability:	Shelf life: one year from despatch.
Predicted Protein Size:	83kDa
Gene Name:	N-ethylmaleimide sensitive factor
Database Link:	<a href="#">XP_001128468</a> <a href="#">Entrez Gene 4905 Human</a> <a href="#">P46459</a>
Background:	The functions of NSF remain unknown.
Synonyms:	SKD2



[View online »](#)

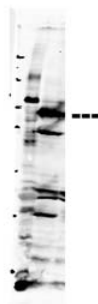
Product images:



WB Suggested Anti-NSF Antibody Titration: 0.2-1 ug/ml  
Positive Control: Human brain

**NSF**

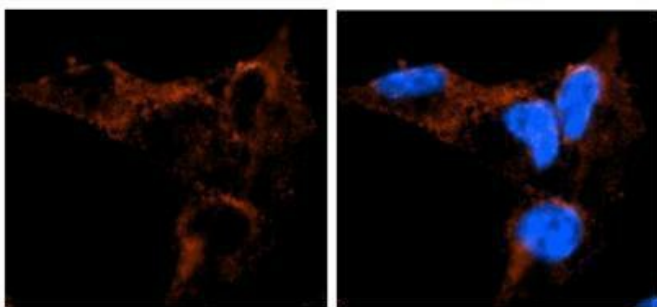
**1 2**



**Sample Type:** 1. NT-2 cells  
2. mouse brain extracts  
**Primary Antibody Dilution:** 2ug/ml  
**Secondary Antibody Dilution:** 1: 20,000  
**Secondary Antibody:** IRDye 800CW goat anti-rabbit from Li-COR Bioscience  
**Lane 1:** 60ug/lane  
**Lane 2:** 80ug/lane  
**Image Submitted by:** Yuzhi Chen  
University of Arkansas for Medical Science

Immunoblot 2 Data for more information.

## NSF



Antibody--RED  
DAPI--Blue

See IHC 1 Data and Customer Feedback for more information

Sample Type:

Mouse brain stem cells

Primary Antibody Dilution:

1:500

Secondary Antibody:

Goat anti-rabbit Alexa-Fluor 594

Secondary Antibody Dilution:

1:1000

Color/Signal Descriptions:

NSF: Red DAPI:Blue

Gene Name:

NSF

Submitted by:

Dr. Yuzhi Chen, University of Arkansas for Medical  
Science