

Product datasheet for **TA356106**

Srrm1 Rabbit Polyclonal Antibody

Product data:

Product Type:	Primary Antibodies
Applications:	WB
Reactivity:	Human, Rat
Host:	Rabbit
Clonality:	Polyclonal
Specificity:	Expected reactivity: Cow, Dog, Guinea Pig, Horse, Human, Mouse, Rabbit, Rat, Yeast, Zebrafish Homology: Cow: 100%; Dog: 100%; Guinea Pig: 100%; Horse: 100%; Human: 100%; Mouse: 100%; Rabbit: 100%; Rat: 100%; Yeast: 92%; Zebrafish: 91%
Formulation:	Liquid. Purified antibody supplied in 1x PBS buffer with 0.09% (w/v) sodium azide and 2% sucrose.
Concentration:	lot specific
Purification:	Affinity Purified
Conjugation:	Unconjugated
Storage:	For short term use, store at 2-8°C up to 1 week. For long term storage, store at -20°C in small aliquots to prevent freeze-thaw cycles.
Stability:	Shelf life: one year from despatch.
Predicted Protein Size:	99kDa
Gene Name:	serine and arginine repetitive matrix 1
Database Link:	NP_001101456 Entrez Gene 313620 Rat
Background:	The function of this protein remains unknown.
Synonyms:	160-KD; MGC39488; POP101; SRM160

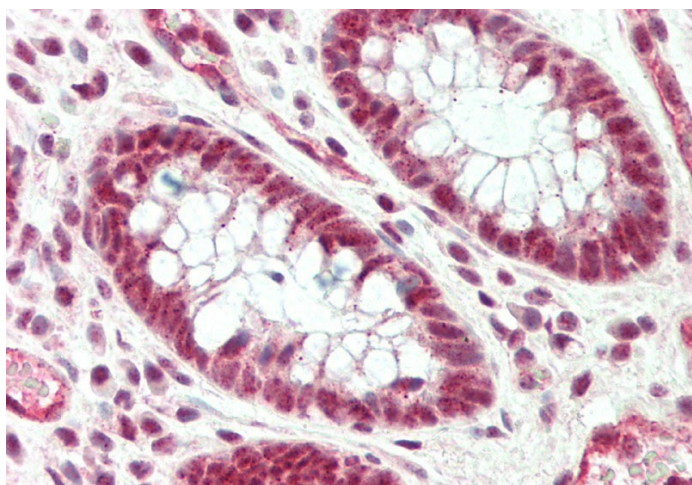


[View online »](#)

Product images:



WB Suggested Anti-Srrm1 Antibody
Titration: 1.0 ug/ml
Positive Control: Rat Brain



Rabbit Anti-Srrm1 antibody
Catalog Number: ARP40607
Formalin Fixed Paraffin Embedded Tissue:
Human Colon
Primary antibody Concentration: 1:100
Secondary Antibody: Donkey anti-Rabbit-Cy3
Secondary Antibody Concentration: 1:200
Magnification: 20x
Exposure Time: 0.5-2.0sec