

Product datasheet for **TA356104**

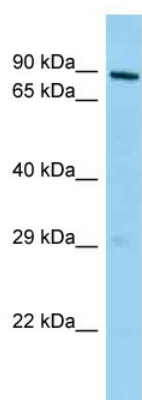
Mphosph10 Rabbit Polyclonal Antibody

Product data:

Product Type:	Primary Antibodies
Applications:	WB
Reactivity:	Mouse
Host:	Rabbit
Clonality:	Polyclonal
Specificity:	Expected reactivity: Cow, Dog, Guinea Pig, Horse, Human, Mouse, Pig, Rabbit, Rat, Zebrafish Homology: Cow: 93%; Dog: 100%; Guinea Pig: 93%; Horse: 100%; Human: 100%; Mouse: 100%; Pig: 100%; Rabbit: 100%; Rat: 100%; Zebrafish: 79%
Formulation:	Liquid. Purified antibody supplied in 1x PBS buffer with 0.09% (w/v) sodium azide and 2% sucrose.
Concentration:	lot specific
Purification:	Affinity Purified
Conjugation:	Unconjugated
Storage:	For short term use, store at 2-8°C up to 1 week. For long term storage, store at -20°C in small aliquots to prevent freeze-thaw cycles.
Stability:	Shelf life: one year from despatch.
Predicted Protein Size:	79kDa
Gene Name:	M-phase phosphoprotein 10 (U3 small nucleolar ribonucleoprotein)
Database Link:	NP_080759 Entrez Gene 67973 Mouse Q810V0
Background:	Mphosph10 is a component of the 60-80S U3 small nucleolar ribonucleoprotein (U3 snoRNP). It is required for the early cleavages during pre-18S ribosomal RNA processing.
Synonyms:	CT90; MPP10; MPP10P



[View online »](#)

Product images:

WB Suggested Anti-Mphosph10 Antibody
Titration: 1.0 ug/ml
Positive Control: Mouse Thymus