

Product datasheet for **TA356099**

MAP3K13 Rabbit Polyclonal Antibody

Product data:

Product Type:	Primary Antibodies
Applications:	WB
Reactivity:	Human
Host:	Rabbit
Clonality:	Polyclonal
Immunogen:	The immunogen is a synthetic peptide directed towards the C terminal region of human MAP3K13
Specificity:	Expected reactivity: Cow; Dog; Guinea Pig; Horse; Human; Mouse; Pig; Rabbit; Rat; Zebrafish Homology: Cow: 100%; Dog: 100%; Guinea Pig: 93%; Horse: 100%; Human: 100%; Mouse: 93%; Pig: 100%; Rabbit: 93%; Rat: 93%; Zebrafish: 85%
Formulation:	Liquid. Purified antibody supplied in 1x PBS buffer with 0.09% (w/v) sodium azide and 2% sucrose. <i>Note that this product is shipped as lyophilized powder to China customers.</i>
Concentration:	lot specific
Purification:	Affinity purified
Conjugation:	Unconjugated
Storage:	For short term use, store at 2-8°C up to 1 week. For long term storage, store at -20°C in small aliquots to prevent freeze-thaw cycles.
Stability:	Shelf life: one year from despatch.
Predicted Protein Size:	966
Gene Name:	mitogen-activated protein kinase kinase kinase 13
Database Link:	NP_004712 Entrez Gene 9175 Human O43283
Background:	The protein encoded by this gene is a member of serine/threonine protein kinase family. This kinase contains a dual leucine-zipper motif, and has been shown to form dimers/oligomers through its leucine-zipper motif. This kinase can phosphorylate and activate MAPK8/JNK, MAP2K7/MKK7, which suggests a role in the JNK signaling pathway.



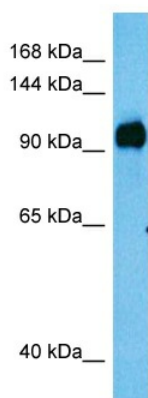
[View online »](#)

Synonyms: LZK; MEKK13; MGC133196; MLK; OTTHUMP00000210397

Protein Families: Druggable Genome, Protein Kinase, Transcription Factors

Protein Pathways: MAPK signaling pathway

Product images:



Host: Rabbit
Target Name: MAP3K13
Sample Type: HT1080 Cell Lysate
Antibody Dilution: 1.0 μ g/ml

Host: Rabbit
Target Name: MAP3K13
Sample Tissue: Human HT1080 Whole Cell lysates
Antibody Dilution: 1 μ g/ml