

Product datasheet for TA356095

GRP94 (HSP90B1) Rabbit Polyclonal Antibody

Product data:

Product Type:	Primary Antibodies
Applications:	IHC, WB
Reactivity:	Human
Host:	Rabbit
Clonality:	Polyclonal
Immunogen:	The immunogen is a synthetic peptide directed towards the C terminal region of human HSP90B1
Specificity:	Expected reactivity: Cow, Dog, Horse, Human, Mouse, Pig, Rabbit, Rat, Yeast, Zebrafish Homology: Cow: 93%; Dog: 93%; Horse: 93%; Human: 100%; Mouse: 85%; Pig: 93%; Rabbit: 86%; Rat: 93%; Yeast: 100%; Zebrafish: 81%
Formulation:	Liquid. Purified antibody supplied in 1x PBS buffer with 0.09% (w/v) sodium azide and 2% sucrose. <i>Note that this product is shipped as lyophilized powder to China customers.</i>
Concentration:	lot specific
Purification:	Affinity Purified
Conjugation:	Unconjugated
Storage:	For short term use, store at 2-8°C up to 1 week. For long term storage, store at -20°C in small aliquots to prevent freeze-thaw cycles.
Stability:	Shelf life: one year from despatch.
Predicted Protein Size:	90kDa
Gene Name:	heat shock protein 90kDa beta family member 1
Database Link:	NP_003290 Entrez Gene 7184 Human P14625
Background:	HSP90B1 belongs to the heat shock protein 90 family. It is molecular chaperone that functions in the processing and transport of secreted proteins.
Synonyms:	ECGP; GP96; GRP94; TRA1
Protein Families:	Druggable Genome



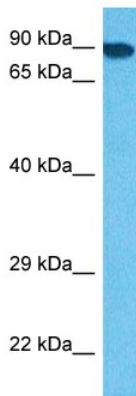
[View online »](#)

Protein Pathways: NOD-like receptor signaling pathway, Pathways in cancer, Prostate cancer

Product images:

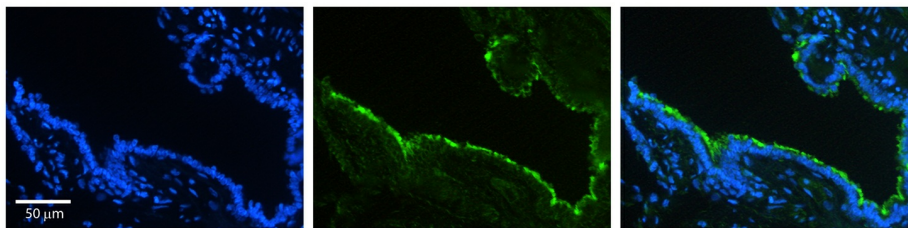


WB Suggested Anti-HSP90B1 Antibody Titration:
0.2-1 ug/ml
ELISA Titer: 1:312500
Positive Control: 293T cell lysate
HSP90B1 is strongly supported by BioGPS gene expression data to be expressed in Human HEK293T cells



Host: Rabbit
Target Name: HSP90B1
Sample Type: A549 Cell Lysate
Antibody Dilution: 1.0µg/ml

Host: Rabbit
Target Name: HSP90B1
Sample Tissue: Human A549 Whole Cell
Antibody Dilution: 0.5ug/ml



HSP90B1 antibody - C-terminal region (TA356095)
Catalog Number: TA356095
Formalin Fixed Paraffin Embedded Tissue:
Human Bronchial Epithelial Tissue
Observed Staining: Cytoplasm and membrane of bronchial epithelial tissue
Primary Antibody Concentration: 1:100
Other Working Concentrations: 1/600
Secondary Antibody: Donkey anti-Rabbit-Cy3
Secondary Antibody Concentration: 1:200
Magnification: 20X
Exposure Time: 0.5–2.0 sec