

Product datasheet for **TA356087**

Zinc finger MIZ domain containing protein 1 (ZMIZ1) Rabbit Polyclonal Antibody

Product data:

Product Type:	Primary Antibodies
Applications:	WB
Reactivity:	Human
Host:	Rabbit
Clonality:	Polyclonal
Immunogen:	The immunogen is a synthetic peptide directed towards the N terminal region of human ZMIZ1
Specificity:	Expected reactivity: Human Homology: Cow: 86%; Dog: 93%; Guinea Pig: 77%; Horse: 93%; Human: 100%; Mouse: 79%; Pig: 93%; Rat: 79%
Formulation:	Liquid. Purified antibody supplied in 1x PBS buffer with 0.09% (w/v) sodium azide and 2% sucrose. <i>Note that this product is shipped as lyophilized powder to China customers.</i>
Concentration:	lot specific
Purification:	Affinity purified
Conjugation:	Unconjugated
Storage:	For short term use, store at 2-8°C up to 1 week. For long term storage, store at -20°C in small aliquots to prevent freeze-thaw cycles.
Stability:	Shelf life: one year from despatch.
Predicted Protein Size:	115 kDa
Gene Name:	zinc finger MIZ-type containing 1
Database Link:	NP_065071 Entrez Gene 57178 Human Q9ULJ6



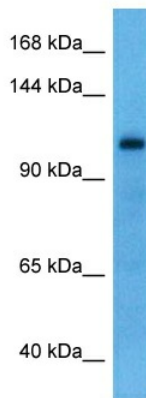
[View online »](#)

Background:

This gene encodes a member of the PIAS (protein inhibitor of activated STAT) family of proteins. The encoded protein regulates the activity of various transcription factors, including the androgen receptor, Smad3/4, and p53. The encoded protein may also play a role in sumoylation. A translocation between this locus on chromosome 10 and the protein tyrosine kinase ABL1 locus on chromosome 9 has been associated with acute lymphoblastic leukemia.

Synonyms:

FLJ13541; hZIMP10; KIAA1224; MIZ; RAI17; RP11-519K18.1; Zimp10

Product images:

Host: Rabbit
Target Name: SUGP2
Sample Type: HCT116 Cell Lysate
Antibody Dilution: 1.0µg/ml

Host: Rabbit
Target Name: SUGP2
Sample Tissue: Human HCT116 Whole Cell lysates
Antibody Dilution: 2ug/ml