

## Product datasheet for **TA356081**

### ZFP57 Rabbit Polyclonal Antibody

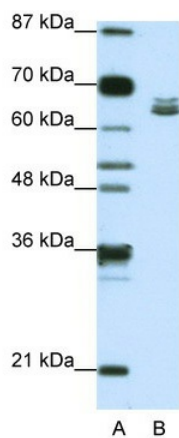
#### Product data:

Product Type:	Primary Antibodies
Applications:	IHC, WB
Reactivity:	Human
Host:	Rabbit
Clonality:	Polyclonal
Immunogen:	The immunogen is a synthetic peptide directed towards the N terminal region of human ZFP57
Specificity:	<b>Expected reactivity:</b> Human <b>Homology:</b> Human: 100%
Formulation:	Liquid. Purified antibody supplied in 1x PBS buffer with 0.09% (w/v) sodium azide and 2% sucrose. <i>Note that this product is shipped as lyophilized powder to China customers.</i>
Concentration:	lot specific
Purification:	Protein A purified
Conjugation:	Unconjugated
Storage:	For short term use, store at 2-8°C up to 1 week. For long term storage, store at -20°C in small aliquots to prevent freeze-thaw cycles.
Stability:	Shelf life: one year from despatch.
Predicted Protein Size:	59kDa
Gene Name:	ZFP57 zinc finger protein
Database Link:	<a href="#">XP_945837</a> <a href="#">Entrez Gene 346171 Human</a> <a href="#">Q9NU63</a>
Background:	ZFP57 is a protein similar to zinc finger protein 57. It is derived from an annotated genomic sequence (NT_007592) using gene prediction method.
Synonyms:	bA145L22; bA145L22.2; C6orf40; TNDM1; Zfp-57; ZNF698
Protein Families:	ES Cell Differentiation/IPS

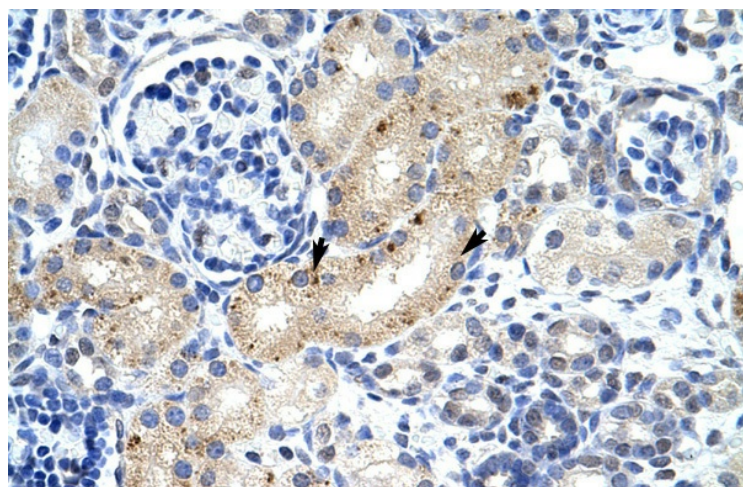


[View online »](#)

## Product images:



WB Suggested Anti-ZFP57 Antibody Titration:  
1.25ug/ml  
ELISA Titer: 1:312500  
Positive Control: Jurkat cell lysate



Human kidney