

## Product datasheet for **TA356078**

### ZBTB38 Rabbit Polyclonal Antibody

#### Product data:

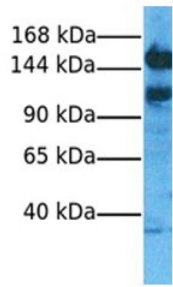
Product Type:	Primary Antibodies
Applications:	IHC, WB
Reactivity:	Human
Host:	Rabbit
Clonality:	Polyclonal
Immunogen:	The immunogen is a synthetic peptide directed towards the N terminal region of human ZBTB38
Specificity:	<b>Expected reactivity:</b> Cow, Dog, Guinea Pig, Horse, Human, Mouse, Rabbit, Rat <b>Homology:</b> Cow: 86%; Dog: 93%; Guinea Pig: 100%; Horse: 100%; Human: 100%; Mouse: 100%; Rabbit: 91%; Rat: 100%
Formulation:	Liquid. Purified antibody supplied in 1x PBS buffer with 0.09% (w/v) sodium azide and 2% sucrose. <i>Note that this product is shipped as lyophilized powder to China customers.</i>
Concentration:	lot specific
Purification:	Protein A purified
Conjugation:	Unconjugated
Storage:	For short term use, store at 2-8°C up to 1 week. For long term storage, store at -20°C in small aliquots to prevent freeze-thaw cycles.
Stability:	Shelf life: one year from despatch.
Predicted Protein Size:	131kDa
Gene Name:	zinc finger and BTB domain containing 38
Database Link:	<a href="#">XP_001133510</a> <a href="#">Entrez Gene 253461 Human</a> <a href="#">Q8NAP3</a>
Background:	ZBTB38 contains 10 C2H2-type zinc fingers and 1 BTB (POZ) domain. ZBTB38 acts as a transcriptional activator and may be involved in the differentiation and/or survival of late postmitotic neurons.
Synonyms:	CIBZ; FLJ22332; FLJ31131; FLJ35036



[View online »](#)

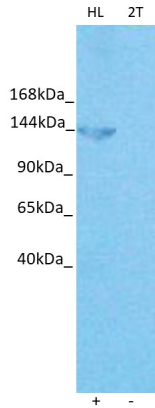
Product images:

**ZBTB38**



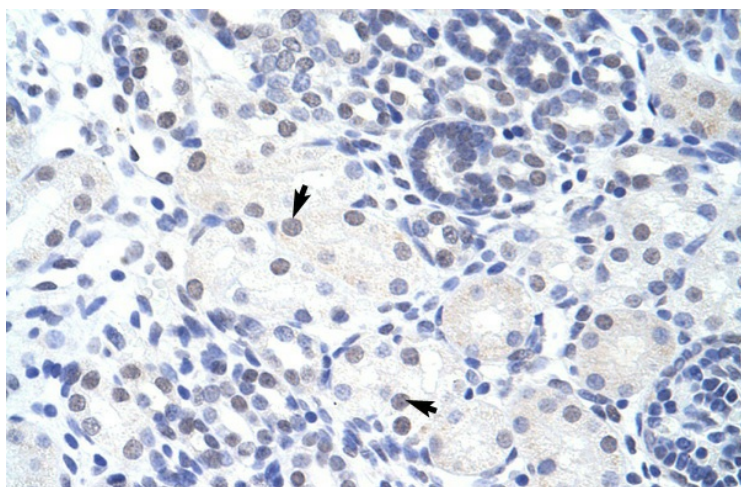
Host: Rabbit  
 Target Name: ZBTB38  
 Sample Type: HeLa  
 Antibody Dilution: 1ug/ml

Host: Rabbit  
 Target Name: ZBTB38  
 Sample Tissue: Human HeLa  
 Antibody Dilution: 1.0ug/ml



Host: Rabbit  
 Target name: ZBTB38  
 Positive control: ~25ug HeLa Cell Lysate (HL)  
 Negative control: ~25ug 293T Cell Lysate (2T)  
 Antibody concentration: 3ug/ml

Host: Rabbit  
 Target: ZBTB38  
 Positive control (+): HeLa Cell Lysate (HL)  
 Negative control (-): 293T Cell Lysate (2T)  
 Antibody concentration: 3ug/ml



Human kidney