

Product datasheet for TA356073

CUX1 Rabbit Polyclonal Antibody

Product data:

Product Type:	Primary Antibodies
Applications:	WB
Reactivity:	Human
Host:	Rabbit
Clonality:	Polyclonal
Immunogen:	The immunogen is a synthetic peptide directed towards the C terminal region of human CUX1
Specificity:	Expected reactivity: Human Homology: Cow: 100%; Dog: 100%; Human: 100%; Pig: 100%
Formulation:	Liquid. Purified antibody supplied in 1x PBS buffer with 0.09% (w/v) sodium azide and 2% sucrose. <i>Note that this product is shipped as lyophilized powder to China customers.</i>
Concentration:	lot specific
Purification:	Affinity purified
Conjugation:	Unconjugated
Storage:	For short term use, store at 2-8°C up to 1 week. For long term storage, store at -20°C in small aliquots to prevent freeze-thaw cycles.
Stability:	Shelf life: one year from despatch.
Predicted Protein Size:	165 kDa
Gene Name:	cut like homeobox 1
Database Link:	NP_001189473.1 Entrez Gene 1523 Human P39880
Background:	The protein encoded by this gene is a member of the homeodomain family of DNA binding proteins. It may regulate gene expression, morphogenesis, and differentiation and it may also play a role in the cell cycle progression. Several alternatively spliced transcript variants encoding different isoforms have been identified.

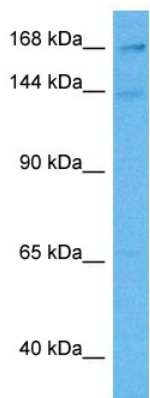


[View online »](#)

Synonyms: CASP; CDP; CDP/Cut; CDP/Cux; CDP1; Clox; COY1; CUT; CUTL1; CUX; Cux/CDP; GOLIM6; Nbla10317; p75; p100; p110; p200

Protein Families: Transcription Factors, Transmembrane

Product images:



Host: Rabbit
Target Name: CUX1
Sample Type: HeLa Cell Lysate
Antibody Dilution: 1.0 μ g/ml

Host: Rabbit
Target Name: CUX1
Sample Tissue: Human HeLa Whole Cell lysates
Antibody Dilution: 1 μ g/ml