

Product datasheet for **TA356060**

CTIP2 (BCL11B) Rabbit Polyclonal Antibody

Product data:

Product Type:	Primary Antibodies
Applications:	WB
Reactivity:	Human
Host:	Rabbit
Clonality:	Polyclonal
Immunogen:	The immunogen is a synthetic peptide directed towards the N terminal region of human BCL11B
Specificity:	Expected reactivity: Human Homology: Cow: 100%; Dog: 100%; Guinea Pig: 100%; Horse: 100%; Human: 100%; Mouse: 100%; Rabbit: 100%; Rat: 100%; Zebrafish: 100%
Formulation:	Liquid. Purified antibody supplied in 1x PBS buffer with 0.09% (w/v) sodium azide and 2% sucrose. <i>Note that this product is shipped as lyophilized powder to China customers.</i>
Concentration:	lot specific
Purification:	Affinity purified
Conjugation:	Unconjugated
Storage:	For short term use, store at 2-8°C up to 1 week. For long term storage, store at -20°C in small aliquots to prevent freeze-thaw cycles.
Stability:	Shelf life: one year from despatch.
Predicted Protein Size:	88 kDa
Gene Name:	B-cell CLL/lymphoma 11B
Database Link:	NP_612808 Entrez Gene 64919 Human Q9C0K0-2



[View online »](#)

Background:

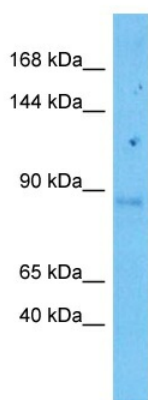
This gene encodes a C2H2-type zinc finger protein and is closely related to BCL11A, a gene whose translocation may be associated with B-cell malignancies. Although the specific function of this gene has not been determined, the encoded protein is known to be a transcriptional repressor, and is regulated by the NURD nucleosome remodeling and histone deacetylase complex. Four alternatively spliced transcript variants encoding distinct isoforms have been found for this gene.

Synonyms:

CTIP-2; CTIP2; hRit1; hRIT1-alpha; RIT1

Protein Families:

Druggable Genome

Product images:

Host: Rabbit
Target Name: BCL11B
Sample Type: PANC1 Cell Lysate
Antibody Dilution: 1.0µg/ml

Host: Rabbit
Target Name: BCL11B
Sample Tissue: Human PANC1 Whole Cell lysates
Antibody Dilution: 1ug/ml