

## Product datasheet for **TA356059**

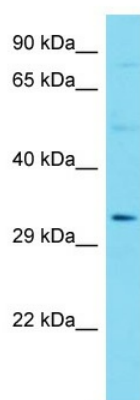
### Creb1 Rabbit Polyclonal Antibody

#### Product data:

Product Type:	Primary Antibodies
Applications:	WB
Reactivity:	Mouse
Host:	Rabbit
Clonality:	Polyclonal
Immunogen:	The immunogen is a synthetic peptide directed towards the N-terminal region of Mouse Creb1
Specificity:	<b>Expected reactivity:</b> Cow, Dog, Guinea Pig, Horse, Human, Mouse, Pig, Rabbit, Rat <b>Homology:</b> Cow: 100%; Dog: 100%; Guinea Pig: 93%; Horse: 100%; Human: 100%; Mouse: 93%; Pig: 100%; Rabbit: 100%; Rat: 100%
Formulation:	Liquid. Purified antibody supplied in 1x PBS buffer with 0.09% (w/v) sodium azide and 2% sucrose. <i>Note that this product is shipped as lyophilized powder to China customers.</i>
Concentration:	lot specific
Purification:	Affinity Purified
Conjugation:	Unconjugated
Storage:	For short term use, store at 2-8°C up to 1 week. For long term storage, store at -20°C in small aliquots to prevent freeze-thaw cycles.
Stability:	Shelf life: one year from despatch.
Predicted Protein Size:	35kDa
Gene Name:	cAMP responsive element binding protein 1
Database Link:	<a href="#">NP_598589</a> <a href="#">Entrez Gene 12912 Mouse</a> <a href="#">Q543W0</a>
Background:	The function of this protein remains unknown.
Synonyms:	CREB; CREB-1; MGC9284; OTTHUMP00000206660



[View online »](#)

**Product images:**

Host: Rabbit  
Target Name: Creb1  
Sample Type: Mouse Heart lysates  
Antibody Dilution: 1.0ug/ml