

## Product datasheet for **TA356055**

### Ccnd1 Rabbit Polyclonal Antibody

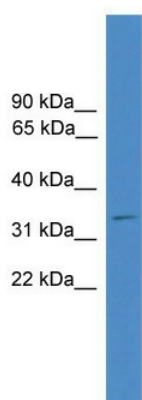
#### Product data:

Product Type:	Primary Antibodies
Applications:	WB
Reactivity:	Human, Mouse
Host:	Rabbit
Clonality:	Polyclonal
Immunogen:	The immunogen is a synthetic peptide corresponding to a region of Mouse
Specificity:	<b>Expected reactivity:</b> Cow, Dog, Guinea Pig, Horse, Human, Mouse, Rat <b>Homology:</b> Cow: 87%; Dog: 80%; Guinea Pig: 90%; Horse: 87%; Human: 100%; Mouse: 86%; Rat: 86%
Formulation:	Liquid. Purified antibody supplied in 1x PBS buffer with 0.09% (w/v) sodium azide and 2% sucrose. <i>Note that this product is shipped as lyophilized powder to China customers.</i>
Concentration:	lot specific
Purification:	Affinity Purified
Conjugation:	Unconjugated
Storage:	For short term use, store at 2-8°C up to 1 week. For long term storage, store at -20°C in small aliquots to prevent freeze-thaw cycles.
Stability:	Shelf life: one year from despatch.
Predicted Protein Size:	33kDa
Gene Name:	cyclin D1
Database Link:	<a href="#">NP_031657</a> <a href="#">Entrez Gene 595 Human</a> <a href="#">Entrez Gene 12443 Mouse</a> <a href="#">P25322</a>
Background:	Ccnd1 is essential for the control of the cell cycle at the G1/S (start) transition.
Synonyms:	BCL1; D11S287E; PRAD1; U21B31

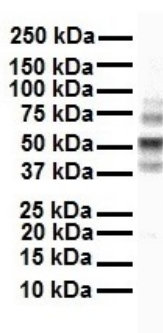


[View online »](#)

Product images:



WB Suggested Anti-Ccnd1 Antibody Titration: 0.2-1 ug/ml  
 ELISA Titer: 1:62500  
 Positive Control: Mouse Small Intestine



WB Suggested Anti-Ccnd1 antibody Titration: 1 ug/mL  
 Sample Type: Human MCF7