

Product datasheet for **TA356053**

Trerf1 Rabbit Polyclonal Antibody

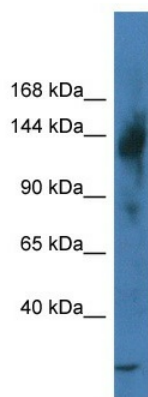
Product data:

Product Type:	Primary Antibodies
Applications:	WB
Reactivity:	Mouse
Host:	Rabbit
Clonality:	Polyclonal
Specificity:	Expected reactivity: Cow, Dog, Guinea Pig, Horse, Human, Mouse, Pig, Rat Homology: Cow: 93%; Dog: 86%; Guinea Pig: 86%; Horse: 86%; Human: 100%; Mouse: 86%; Pig: 93%; Rat: 93%
Formulation:	Liquid. Purified antibody supplied in 1x PBS buffer with 0.09% (w/v) sodium azide and 2% sucrose.
Concentration:	lot specific
Purification:	Affinity Purified
Conjugation:	Unconjugated
Storage:	For short term use, store at 2-8°C up to 1 week. For long term storage, store at -20°C in small aliquots to prevent freeze-thaw cycles.
Stability:	Shelf life: one year from despatch.
Predicted Protein Size:	132kDa
Gene Name:	transcriptional regulating factor 1
Database Link:	NP_766210 Entrez Gene 224829 Mouse Q8BXJ2
Background:	Trerf1 activates transcription of CYP11A1. Interaction with CREBBP and EP300 results in a synergistic transcriptional activation of CYP11A1.
Synonyms:	BCAR2; dj139D8.5; FLJ21198; HSA277276; RAPA; rapa-1; rapa-2; RP1-139D8.5; TReP-132; TREP132



[View online »](#)

Product images:



WB Suggested Anti-Trerf1 Antibody
Titration: 1.0 µg/ml
Positive Control: Mouse Intestine