

Product datasheet for **TA356050**

ZC3H3 Rabbit Polyclonal Antibody

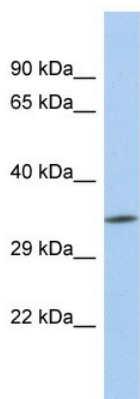
Product data:

Product Type:	Primary Antibodies
Applications:	WB
Reactivity:	Human
Host:	Rabbit
Clonality:	Polyclonal
Immunogen:	The immunogen is a synthetic peptide directed towards the N-terminal region of Human ZC3H3
Specificity:	Expected reactivity: Human Homology: Human: 100%
Formulation:	Liquid. Purified antibody supplied in 1x PBS buffer with 0.09% (w/v) sodium azide and 2% sucrose.
Concentration:	lot specific
Purification:	Affinity Purified
Conjugation:	Unconjugated
Storage:	For short term use, store at 2-8°C up to 1 week. For long term storage, store at -20°C in small aliquots to prevent freeze-thaw cycles.
Stability:	Shelf life: one year from despatch.
Predicted Protein Size:	36kDa
Gene Name:	zinc finger CCCH-type containing 3
Database Link:	Entrez Gene 23144 Human Q8IXZ2-2
Background:	The function of this protein remains unknown.
Synonyms:	KIAA0150; ZC3HDC3



[View online »](#)

Product images:



Host: Rabbit
Target Name: ZC3H3
Sample Type: MCF7 Whole cell lysates
Antibody Dilution: 1.0ug/ml