

## Product datasheet for **TA356049**

### Bhlhe41 Rabbit Polyclonal Antibody

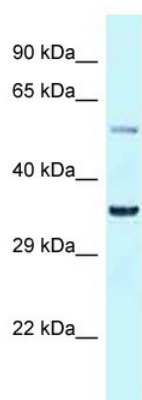
#### Product data:

Product Type:	Primary Antibodies
Applications:	WB
Reactivity:	Rat
Host:	Rabbit
Clonality:	Polyclonal
Specificity:	<b>Expected reactivity:</b> Cow, Dog, Guinea Pig, Horse, Human, Mouse, Rat <b>Homology:</b> Cow: 93%; Dog: 93%; Guinea Pig: 93%; Horse: 93%; Human: 100%; Mouse: 93%; Rat: 93%
Formulation:	Liquid. Purified antibody supplied in 1x PBS buffer with 0.09% (w/v) sodium azide and 2% sucrose. <i>Note that this product is shipped as lyophilized powder to China customers.</i>
Concentration:	lot specific
Purification:	Affinity Purified
Conjugation:	Unconjugated
Storage:	For short term use, store at 2-8°C up to 1 week. For long term storage, store at -20°C in small aliquots to prevent freeze-thaw cycles.
Stability:	Shelf life: one year from despatch.
Predicted Protein Size:	33kDa
Gene Name:	basic helix-loop-helix family, member e41
Database Link:	<a href="#">XP_001074956</a> <a href="#">Entrez Gene 117095 Rat</a> <a href="#">O35779</a>
Background:	Bhlhe41 may play a role in regulating neuronal differentiation during development and adaptive neuronal plasticity and neurite outgrowth in the adult.
Synonyms:	BHLHB3; DEC2; hDEC2; SHARP-1; SHARP1



[View online »](#)

Product images:



WB Suggested Anti-Bhlhe41 Antibody  
Titration: 1.0 ug/ml  
Positive Control: Rat Liver