

Product datasheet for **TA356048**

TCF7L2 Rabbit Polyclonal Antibody

Product data:

Product Type:	Primary Antibodies
Applications:	WB
Reactivity:	Human, Mouse
Host:	Rabbit
Clonality:	Polyclonal
Immunogen:	The immunogen is a synthetic peptide directed towards the N terminal region of human TCF7L2
Specificity:	Expected reactivity: Human Homology: Cow: 100%; Dog: 75%; Guinea Pig: 75%; Human: 100%; Mouse: 100%; Pig: 100%; Rat: 100%; Zebrafish: 100%
Formulation:	Liquid. Purified antibody supplied in 1x PBS buffer with 0.09% (w/v) sodium azide and 2% sucrose. <i>Note that this product is shipped as lyophilized powder to China customers.</i>
Concentration:	lot specific
Purification:	Affinity purified
Conjugation:	Unconjugated
Storage:	For short term use, store at 2-8°C up to 1 week. For long term storage, store at -20°C in small aliquots to prevent freeze-thaw cycles.
Stability:	Shelf life: one year from despatch.
Predicted Protein Size:	68 kDa
Gene Name:	transcription factor 7 like 2
Database Link:	XP_005270141 Entrez Gene 6934 Human Q9NQB0



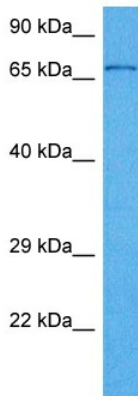
[View online »](#)

Background:

This gene encodes a high mobility group (HMG) box-containing transcription factor that plays a key role in the Wnt signaling pathway. The protein has been implicated in blood glucose homeostasis. Genetic variants of this gene are associated with increased risk of type 2 diabetes. Several transcript variants encoding multiple different isoforms have been found for this gene.

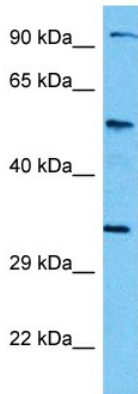
Synonyms:

hTCF-4; TCF-4; TCF4

Product images:


Host: Rabbit
 Target Name: TCF7L2
 Sample Type: HCT15 Cell Lysate
 Antibody Dilution: 1.0µg/ml

Host: Rabbit
 Target Name: TCF7L2
 Sample Tissue: Human HCT15 Whole Cell lysates
 Antibody Dilution: 1ug/ml



Host: Rabbit
 Target Name: Tcf7l2
 Sample Type: Mouse Kidney Lysate
 Antibody Dilution: 1.0µg/ml

Host: Mouse
 Target Name: TCF7L2
 Sample Tissue: Mouse Kidney
 Antibody Dilution: 1ug/ml