

Product datasheet for **TA356046**

GRHL2 Rabbit Polyclonal Antibody

Product data:

Product Type:	Primary Antibodies
Applications:	IHC, WB
Reactivity:	Human
Host:	Rabbit
Clonality:	Polyclonal
Immunogen:	The immunogen is a synthetic peptide directed towards the middle region of human GRHL2
Specificity:	Expected reactivity: Cow, Dog, Guinea Pig, Horse, Human, Mouse, Rabbit, Rat, Zebrafish Homology: Cow: 100%; Dog: 100%; Guinea Pig: 100%; Horse: 100%; Human: 100%; Mouse: 100%; Rabbit: 100%; Rat: 100%; Zebrafish: 100%
Formulation:	Liquid. Purified antibody supplied in 1x PBS buffer with 0.09% (w/v) sodium azide and 2% sucrose. <i>Note that this product is shipped as lyophilized powder to China customers.</i>
Concentration:	lot specific
Purification:	Affinity Purified
Conjugation:	Unconjugated
Storage:	For short term use, store at 2-8°C up to 1 week. For long term storage, store at -20°C in small aliquots to prevent freeze-thaw cycles.
Stability:	Shelf life: one year from despatch.
Predicted Protein Size:	71kDa
Gene Name:	grainyhead like transcription factor 2
Database Link:	NP_079191 Entrez Gene 79977 Human Q6ISB3



[View online »](#)

Background:

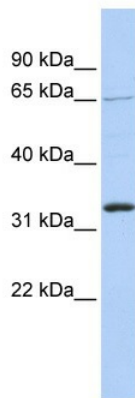
GRHL2 is a transcription factor that can act as a homodimer or as a heterodimer with either GRHL1 or GRHL3. Defects in this gene are a cause of non-syndromic sensorineural deafness autosomal dominant type 28 (DFNA28). TFCP2L3 is a member of a family of transcription factor genes whose archetype is TFCP2 (MIM 189889), a mammalian ortholog of the *Drosophila* gene 'grainyhead' (grh). [supplied by OMIM]. Sequence Note: This RefSeq record was created from transcript and genomic sequence data because transcript sequence consistent with the reference genome assembly was not available for all regions of the RefSeq transcript. The extent of this transcript is supported by transcript alignments.

Synonyms:

0610015A08Rik; BOM; RGD1561191; Tcfcp2l3

Protein Families:

Transcription Factors

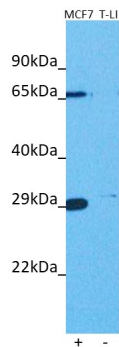
Product images:


WB Suggested Anti-GRHL2 Antibody Titration: 1 ug/ml
Positive Control: 721_B cell lysate



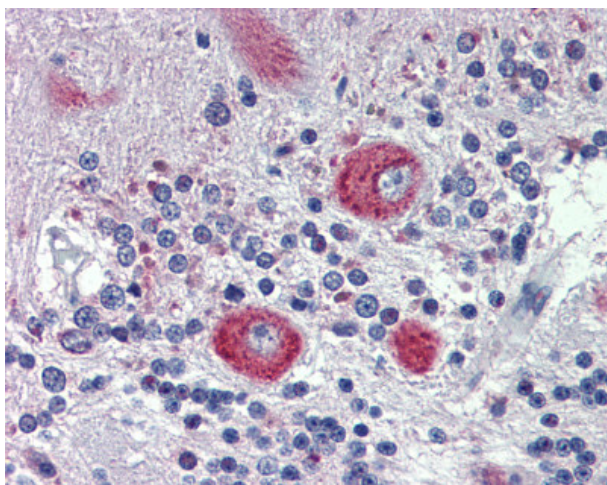
Host: Rabbit
Target Name: GRHL2
Sample Type: HepG2 Cell Lysate
Antibody Dilution: 1.0 µg/ml

Host: Rabbit
Target Name: GRHL2
Sample Tissue: Human HepG2 Whole Cell
Antibody Dilution: 1 ug/ml



Host: Rabbit
 Target name: GRHL2
 Positive control: ~25ug MCF7 Cell lysate (MCF7)
 Negative control: ~25ug Human Liver Tumor (T-LI)
 Antibody concentration: 3ug/ml

Host: Rabbit
 Target: GRHL2
 Positive control (+): MCF7 (N10)
 Negative control (-): Human liver (LI)
 Antibody concentration: 3ug/ml



Rabbit Anti-GRHL2 Antibody
 Catalog Number: ARP39635
 Paraffin Embedded Tissue: Human Brain
 Antibody Concentration: 5 ug/ml

