

Product datasheet for **TA356044**

ZFHx4 Rabbit Polyclonal Antibody

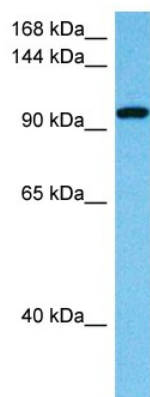
Product data:

Product Type:	Primary Antibodies
Applications:	WB
Reactivity:	Human
Host:	Rabbit
Clonality:	Polyclonal
Immunogen:	The immunogen is a synthetic peptide directed towards the N terminal region of human ZFHx4
Specificity:	Expected reactivity: Cow; Dog; Guinea Pig; Horse; Human; Mouse; Rabbit; Rat Homology: Cow: 100%; Dog: 100%; Guinea Pig: 100%; Horse: 100%; Human: 100%; Mouse: 100%; Rabbit: 100%; Rat: 100%
Formulation:	Liquid. Purified antibody supplied in 1x PBS buffer with 0.09% (w/v) sodium azide and 2% sucrose. <i>Note that this product is shipped as lyophilized powder to China customers.</i>
Concentration:	lot specific
Purification:	Affinity purified
Conjugation:	Unconjugated
Storage:	For short term use, store at 2-8°C up to 1 week. For long term storage, store at -20°C in small aliquots to prevent freeze-thaw cycles.
Stability:	Shelf life: one year from despatch.
Predicted Protein Size:	1049
Gene Name:	zinc finger homeobox 4
Database Link:	Entrez Gene 79776 Human Q86UP3-3
Background:	May play a role in neural and muscle differentiation. May be involved in transcriptional regulation.
Synonyms:	FLJ16514; FLJ20980; ZFH-4; ZFH4; ZHF4



[View online »](#)

Product images:



Host: Rabbit
Target Name: ZFHX4
Sample Type: THP-1 Cell Lysate
Antibody Dilution: 1.0 μ g/ml

Host: Rabbit
Target Name: ZFHX4
Sample Tissue: Human THP-1 Whole Cell lysates
Antibody Dilution: 1 μ g/ml