

## Product datasheet for **TA356042**

### Foxl2 Rabbit Polyclonal Antibody

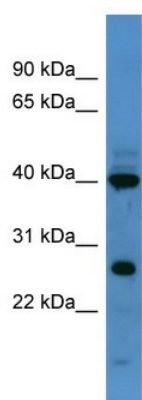
#### Product data:

Product Type:	Primary Antibodies
Applications:	WB
Reactivity:	Rat
Host:	Rabbit
Clonality:	Polyclonal
Immunogen:	The immunogen is a synthetic peptide corresponding to a region of Rat
Specificity:	<b>Expected reactivity:</b> Cow, Goat, Horse, Human, Mouse, Pig, Rabbit, Rat <b>Homology:</b> Cow: 100%; Goat: 100%; Horse: 92%; Human: 100%; Mouse: 100%; Pig: 100%; Rabbit: 100%; Rat: 100%
Formulation:	Liquid. Purified antibody supplied in 1x PBS buffer with 0.09% (w/v) sodium azide and 2% sucrose. <i>Note that this product is shipped as lyophilized powder to China customers.</i>
Concentration:	lot specific
Purification:	Affinity Purified
Conjugation:	Unconjugated
Storage:	For short term use, store at 2-8°C up to 1 week. For long term storage, store at -20°C in small aliquots to prevent freeze-thaw cycles.
Stability:	Shelf life: one year from despatch.
Predicted Protein Size:	39kDa
Gene Name:	forkhead box L2
Database Link:	<a href="#">XP_001070279</a> <a href="#">Entrez Gene 367152 Rat</a> <a href="#">D4A0S1</a>
Background:	The function of Foxl2 remains unknown.
Synonyms:	BPES; BPES1; PFRK; PINTO; POF3



[View online »](#)

## Product images:



WB Suggested Anti-Foxl2 Antibody Titration: 0.2-1 ug/ml  
ELISA Titer: 1:62500  
Positive Control: Rat Liver