

## Product datasheet for **TA356040**

### Prrx1 Rabbit Polyclonal Antibody

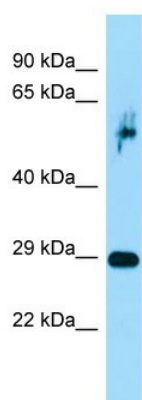
#### Product data:

Product Type:	Primary Antibodies
Applications:	WB
Reactivity:	Rat
Host:	Rabbit
Clonality:	Polyclonal
Immunogen:	The immunogen is a synthetic peptide directed towards the C-terminal region of Rat Prrx1
Specificity:	<b>Expected reactivity:</b> Cow, Dog, Guinea Pig, Human, Mouse, Rabbit, Rat, Zebrafish <b>Homology:</b> Cow: 100%; Dog: 100%; Guinea Pig: 100%; Human: 100%; Mouse: 100%; Rabbit: 100%; Rat: 100%; Zebrafish: 86%
Formulation:	Liquid. Purified antibody supplied in 1x PBS buffer with 0.09% (w/v) sodium azide and 2% sucrose. <i>Note that this product is shipped as lyophilized powder to China customers.</i>
Concentration:	lot specific
Purification:	Affinity Purified
Conjugation:	Unconjugated
Storage:	For short term use, store at 2-8°C up to 1 week. For long term storage, store at -20°C in small aliquots to prevent freeze-thaw cycles.
Stability:	Shelf life: one year from despatch.
Predicted Protein Size:	26kDa
Gene Name:	paired related homeobox 1
Database Link:	<a href="#">NP_722543</a> <a href="#">Entrez Gene 266813 Rat P63014</a>
Background:	Prrx1 binds the collagen I alpha 1 and the osteocalcin promoters; It acts as a negative regulator of transcription.
Synonyms:	PHOX1; PMX1; PRX-1; PRX1



[View online »](#)

Product images:



Host: Rabbit  
Target Name: Prrx1  
Sample Type: Rat Pancreas lysates  
Antibody Dilution: 1.0ug/ml